

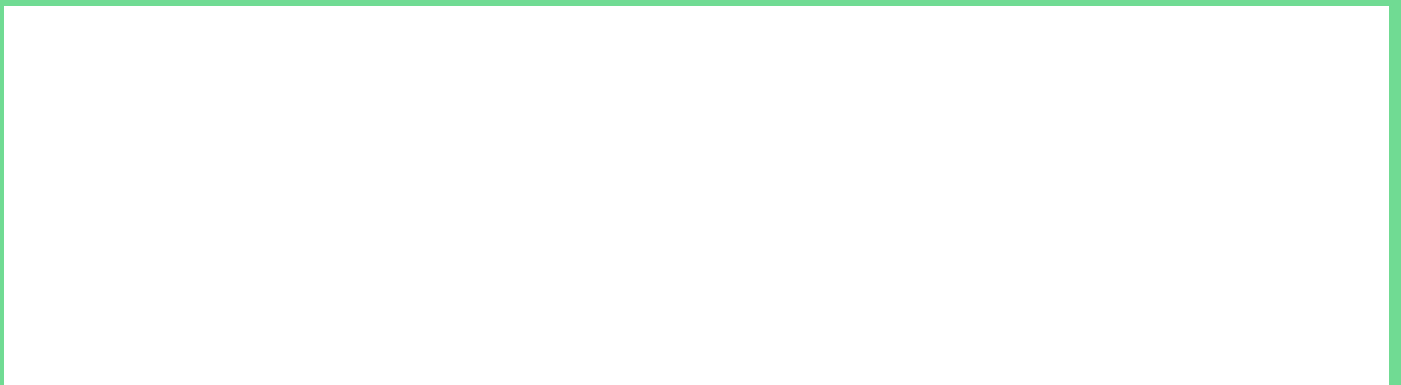
Alexander Skrjabin

Materialien zur Entstehung des Prometheus-Akkordes [Auswahl]

1. *Prelude g-Moll op. 27 Nr. 1* (1900), T. 1

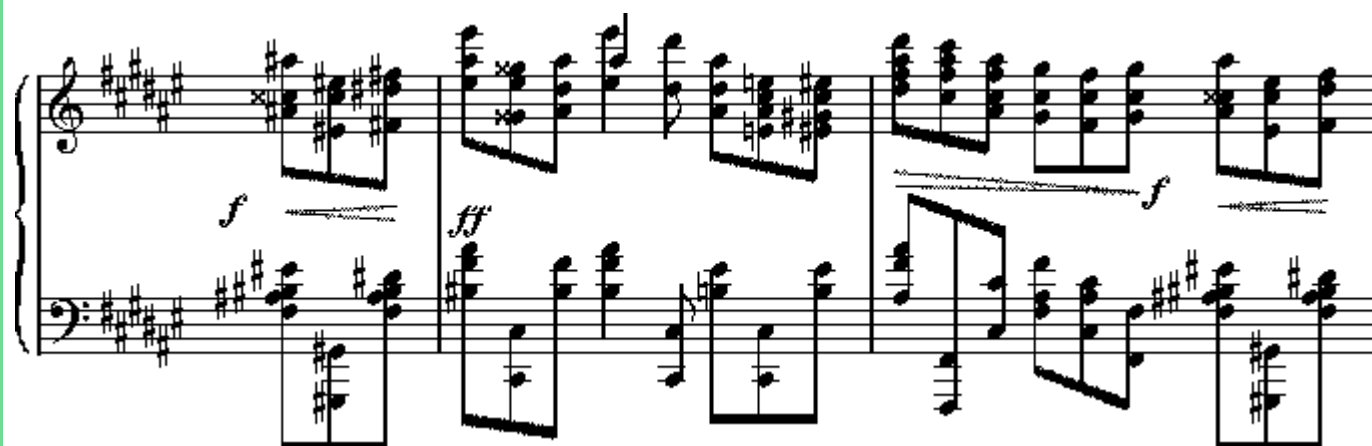
The image shows the first measure of the Prelude in G minor, Op. 27 No. 1 by Scriabin. The score is written for piano in 9/8 time. The tempo/mood is marked "Patetico" and the dynamic is "mf". The right hand features a melodic line with a long slur over the first six notes, while the left hand provides a harmonic accompaniment with chords and moving lines.

2. *Poème satanique C-Dur op. 36* (1903), T. 28-30:





3. *Prelude Fis-Dur op. 37 Nr. 2* (1903), T. 6-8:



4. *Poème fantasque C-Dur op. 45 Nr. 2* (1904/05), T. 1:

Presto

A musical score for a piano piece in 3/4 time, marked 'Presto'. The key signature has one sharp (F#). The score consists of two staves, treble and bass clef. The tempo is indicated by the word 'Presto' at the top. The first measure starts with a piano (*p*) dynamic. The music features a mix of eighth and sixteenth notes, with some chords and a fermata in the final measure.

5. Feuille d'album (Albumblatt) op. 58 (1910), T. 1-8:

Con delicatezza

A musical score for a piano piece in 3/4 time, marked 'Con delicatezza'. The key signature has one sharp (F#). The score consists of two systems, each with two staves (treble and bass clef). The first system starts with a pianissimo (*pp*) dynamic. The music is characterized by long, flowing lines with many slurs and ties. The second system includes the instruction 'legato' and 'con voglia' (with desire). The score features various ornaments, including triplets and grace notes, and ends with a fermata.

6. Le Poème du feu 'Prométhée' für Orchester und Chor op. 60 (1908-10):



Dokument erstellt am 16. Dezember 1999

PD Dr. Wolfgang Krebs, Clemens Gresser