

EXCAVATIONS AT THE SETTLEMENT
OF ARTYUSHCHENKO I (BUGAZSKOE)
ON THE TAMAN PENINSULA

The classical-time settlement of Artyushchenko I (Bugazskoe) is situated on the Taman peninsula, approximately 15 km south-east of what is now the Cossack village (*stanitsa*) Taman (ancient Hermonassa), on the shore of the Black Sea. The settlement has been partly demolished by coastal corrosion. Excavations at Artyushchenko I are conducted by the Bougaz group of the Bosphoran Archaeological Expedition from the Institute for the History of Material Culture (St Petersburg). These investigations revealed the intermittent history of the site.¹ Populations came and went for long periods of time.

The site is divided into east and west by an ancient ravine. The results of the excavations also revealed that the eastern side was inhabited in the Archaic, Classical and Hellenistic periods, while the western side was only occupied during the Roman period. During the Archaic period (last third of the 6th – first third of the 5th century BC) it was mainly populated by natives of agricultural tribes from the Kuban River region.² The settlement was probably part of the rural surroundings (*χώρα*) of the *polis* Hermonassa. It seems that it was a temporary (seasonal) settlement, visited by the agriculturalists only during times of field labour.

Remnants of the Classical period (the middle of the 4th century BC) are less numerous. In the Hellenistic period (the second half of the 3rd century – the first part of the 2nd century BC) an iron metallurgy workshop existed for the production of iron.³ The small amount of hand-

¹ Vinogradov 2013 [Ю. А. Виноградов, “Основные итоги изучения поселения Артющенко I (Таманский полуостров)”, *Проблемы истории, филологии и культуры*], 233–241.

² Vinogradov 2002 [Ю. А. Виноградов, “Архаические комплексы поселения Артющенко I”, *Таманская старина*], 61–66; Vinogradov 2006 [“Лепная керамика архаического времени с поселения Артющенко I на Таманском полуострове”, *Записки ИИМК РАН*], 69–76.

³ Vinogradov 2010 [Ю. А. Виноградов, “Железодельная мастерская на поселении Артющенко I (Таманский полуостров)”, *Боспорские чтения*], 80–84.

made pottery,⁴ the presence of Bosporan coins,⁵ terracotta figurines⁶ etc. suggest that it was primarily Greeks who lived here during this period. This workshop was linked to a series of cult complexes in which, or near which, a concentration of numerous terracotta figurines has been found. The cult installations suggest that the small sanctuary was connected to the workshop.⁷

Excavations over the last years have taken place on the western part of the site. Life began here in the 1st century AD, and it was also non-continuous. The settlement history reveals two periods of inhabitation in Roman times: pre-Gothic (1st century AD – first half of the 3rd century AD) and post-Gothic (the second half of the 4th century AD).

The remains of six primitive ground-dwellings and numerous pits belong to the pre-Gothic period. Some pits contained skeletons of dogs and pigs (Fig. 1); these finds may be understood to be sacrificial. In one pit four human skulls were found alongside other human and animal bones (Fig. 2). The pit and ground-dwelling discoveries are typical of the culture of agricultural population of the Bosporan kingdom during the Roman period (Fig. 3). It should also be stressed that the pieces of hand-made pottery discovered there were manufactured in a way typical of local barbarian tribes, and are characteristically found in settlements in this region (Fig. 3, 4–8).

In all probability during this period the settlement was both rural and seasonal. Finds of charred cereal grains suggest that the peasants mainly sowed naked wheat (*Triticum aestivum s. l.*) and six-rowed barley (*Hordeum vulgare*). This combination is typical of the Greek colonies of the Northern

⁴ Stoyanov 2009 [Р. В. Стоянов, “Лепная керамика второй половины III – первой половины II вв. до н. э. из раскопок поселения Артющенко I (1999–2006 гг.)”, *Боспорские исследования*], 268–282.

⁵ Vinogradov, Tereshchenko 2009 [Ю. А. Виноградов, А. Е. Терещенко, “Монеты с поселения Артющенко I на Таманском полуострове”, *Боспорские исследования*], 135–149.

⁶ Vinogradov 2005 [Ю. А. Виноградов, “Терракотные статуэтки поселения Артющенко I”, in: *Четвертая Кубанская археологическая конференция. Тезисы и доклады*], 44–46; Vinogradov 2008 [Ю. А. Виноградов, “Терракотные статуэтки с изображением актера и музыкантов с поселения Артющенко I на Таманском полуострове”, in: *Инструментальная музыка в межкультурном пространстве. Проблемы артикуляции*], 181–184; Novikova 2007 [А. Н. Новикова, “Изображение силена из Артющенко I”, in: *Боспорский феномен: сакральный смысл региона, памятников, находок. Материалы международной научной конференции*], 207–210.

⁷ Vinogradov 2007 [Ю. А. Виноградов, “Культовые комплексы поселения Артющенко I на Таманском полуострове”, *Боспорские чтения*], 62–65; Vakhtina, Vinogradov, Goroncharovskiy 2010, 370–373.

Black sea region.⁸ However, in 2012 a small part of the threshing-floor (5,60 × 4,80 m) was excavated. The area was covered with a layer of clay (5 cm thick). A large amount of charred grains of cereals were found during this investigation of the threshing-floor, but what is highly unusual is that grains of bearded wheat (*Triticum monococcum*) were the most numerous here. This kind of wheat was characteristic of the stepp-forest zone of the Ukraine and not of Taman peninsula or Kuban River region.⁹

The remains of three ground-dwellings belong to the post-Gothic period, of which one is well-preserved (Fig. 4).¹⁰ It is rectangular in shape, with a two-part clay heath situated in the corner. The pottery found in this ground-dwelling is both numerous and diverse, with fragments of various types of hand-made pottery forming the majority of the collection. The set of grains found near the heath is typical of such a find, with naked wheat (*Triticum aestivum* s. l.) the dominant component.

Yurij A. Vinogradov

*Institute for the History of Material Culture,
St Petersburg (IHMC RAS)*

vincat2008@yandex.ru

Bibliography

- I. T. Kruglikova, “Sel’skoje khoz’ajstvo i promysly” [“Agriculture and Domestic Crafts”], in: *Arkheologija SSSR. Antichnye gosudarstva Severnogo Prichernomor’ja* (Moscow 1984) 154–161.
- A. N. Novikova, “Izobrazhenije Silena iz Artyushchenko I” [“Silenus Figurine from Artyushchenko I”], in: *Bosporskij fenomen: sakral’nyj smysl regiona, pam’atnikov, nakhodok. Materialy mezhdunarodnoj nauchnoj konferencii 1* (St Petersburg 2007) 207–210.
- G. O. Pashkevich, “Arkheologija ta paleoetnobotanika” [“Archaeology and Paleoethnobotany”], *Arkheologija 2* (2005) 80–88.
- R. V. Stoyanov, “Lepnaya keramika vtoroj poloviny III – pervoj poloviny II vv. do n. e. iz raskopok poselenija Artyushchenko I (1999–2006 gg.)” [“Hand-made Pottery of the Second Half of the III – First Half of the II Century BC from the Excavations of the Artyushchenko I Settlement (1999–2006)”], *Bosporkije issledovanija 22* (2009) 268–282.

⁸ Kruglikova 1984 [И. Т. Кругликова, “Сельское хозяйство и промыслы”, in: *Археология СССР. Античные государства Северного Причерноморья*], 155; Pashkevich 2005 [Г. О. Пашкевич, “Археология та палеоэтноботаника”, *Археология*], 85.

⁹ Pashkevich 2005 [Г. О. Пашкевич, “Археология та палеоэтноботаника”, *Археология*], 82–83.

¹⁰ Vinogradov 2011 [Ю. А. Виноградов, “Комплекс IV в. н. э. на поселении Артющенко I (Таманский полуостров)”, in: *Европейская Сарматия. Сборник, посвящённый Марку Борисовичу Щукину*], 314–320.

- M. Yu. Vakhtina, Yu. A. Vinogradov, V. A. Goroncharovskiy, “Cult Complexes Discovered by the Bosporan Expedition of the Institute for History of Material Culture, Russian Academy of Sciences (Saint-Petersburg)”, in: *Ancient Sacral Monuments in the Black Sea* (Thessaloniki 2010) 367–398.
- Yu. A. Vinogradov, “Arkhaicheskije kompleksy poselenija Artyushchenko I” [“Archaic Period Complexes of the Artyushchenko I Settlement”], *Tamanskaja starina* 4 (Taman 2002) 61–66.
- Yu. A. Vinogradov, “Terrakotovyje statuetki poselenija Artyushchenko I” [“Terracotta Figurines of the Settlement Artyushchenko I”], in: *Chetv’ortaja Kubanskaja arheologicheskaja konferencija. Tezisy i doklady* (Krasnodar 2005) 44–46.
- Yu. A. Vinogradov, “Lepnaja keramika arkhaiskogo vr’emeni s poselenija Artyushchenko I (Tamanskij poluostrov)” [“Hand-made Pottery of the Archaic Period from the Settlement of Artyushchenko I on the Taman Peninsula”], *Zapiski IIMK RAN* 1 (2006) 69–76.
- Yu. A. Vinogradov, “Kul’tovyje kompleksy poselenija Artyushchenko I na Tamanskom poluostrove” [“Cult Complexes of the Artyushchenko I Settlement on Taman Peninsula”], *Bosporskije chtenija* 7 (Kerch 2007) 62–65.
- Yu. A. Vinogradov, “Terrakotovyje statuetki s izobrazhenijem akt’ora i muzykantov s poselenija Artyushchenko I na Tamanskom poluostrove” [“Terracotta Figurines of an Actor and Musicians from the Settlement of Artyushchenko I on the Taman Peninsula”], in: *Instrumental’naya muzyka v mezhkul’turnom prostranstve. Problemy artikul’acii* (St Petersburg 2008) 181–184.
- Yu. A. Vinogradov, A. E. Tereshchenko, “Monety s poselenija Artyushchenko I na Tamanskom poluostrove” [“Coin Finds from the Artyushchenko I Settlement on the Taman Peninsula”], *Bosporskije issledovanija* 22 (2009) 135–149.
- Yu. A. Vinogradov, “Zhelezodelatel’naja masterskaja na poseleniji Artyushchenko I (Tamanskij poluostrov)” [“Iron Metallurgy Workshop on the Settlement of Artyushchenko I (the Taman Peninsula)”], *Bosporskije chtenija* 11 (Kerch 2010) 80–84.
- Yu. A. Vinogradov, “Kompleks IV v. n. e. na poseleniji Artyushchenko I (Tamanskij poluostrov)” [“The Complex of the 4th Century AD at the Artyushchenko I Settlement (Taman Peninsula)”], in: *Jevropejskaja Sarmatija. Sbornik, posv’ashchonnnyj Marku Borisovichu Shchukinu* (St Petersburg 2011) 314–320.
- Yu. A. Vinogradov, “Osnovnyje itogi izuchenija poselenija Artyushchenko I (Tamanskij poluostrov)” [“Primary Results of a Study of the Artyushchenko I Settlement (Taman Peninsula)”], *Problemy istoriji, filologii i kul’tury* 2 (2013) 233–241.

A survey of the excavations at the settlement of Artyushchenko I (Bugazkoe) conducted by the Bosporan expedition of the Institute for the History of Material Culture, RAS.

Обзор раскопок поселения Артющенко I (Бугазское), проводившихся Боспорской экспедицией Института материальной культуры РАН.

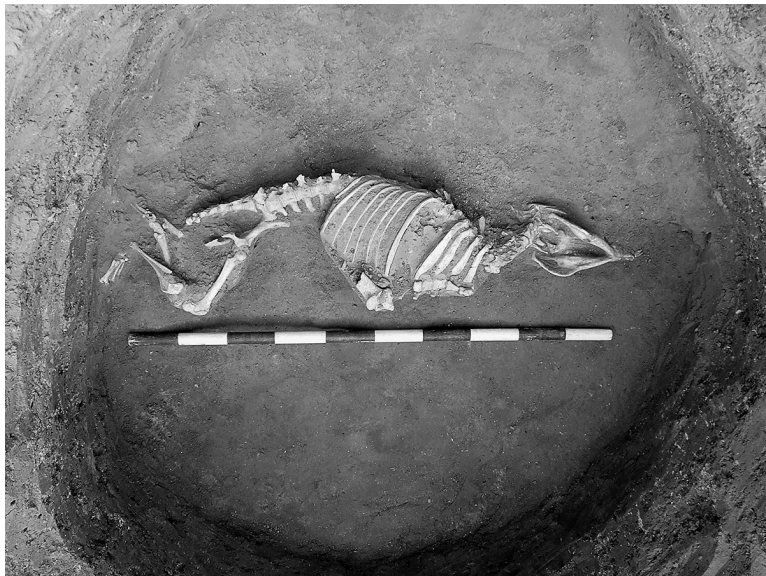


Fig. 1. Artyushchenko I. Pit (no. 59) with the skeleton of a pig.



Fig. 2. Artyushchenko I. Pit (no. 55) with four human skulls.

Yu. A. Vinogradov
Artyushchenko I (Taman Peninsula)

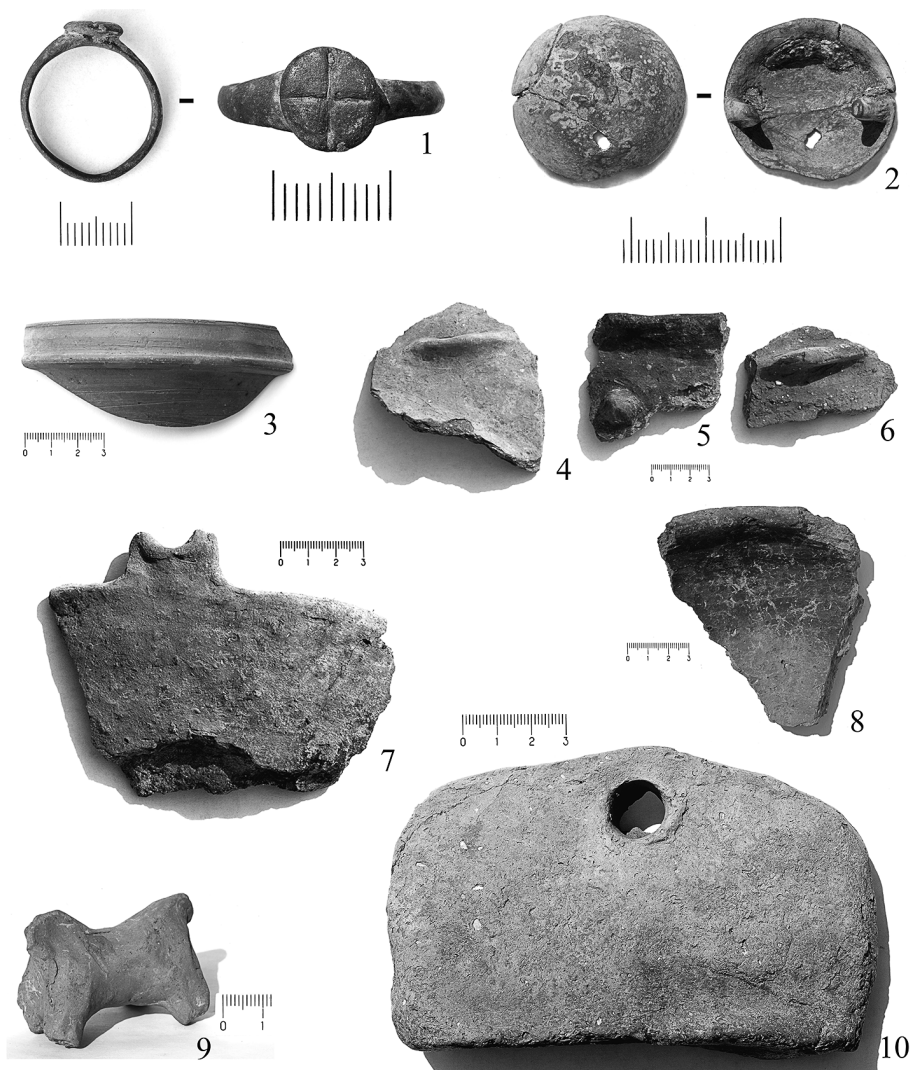


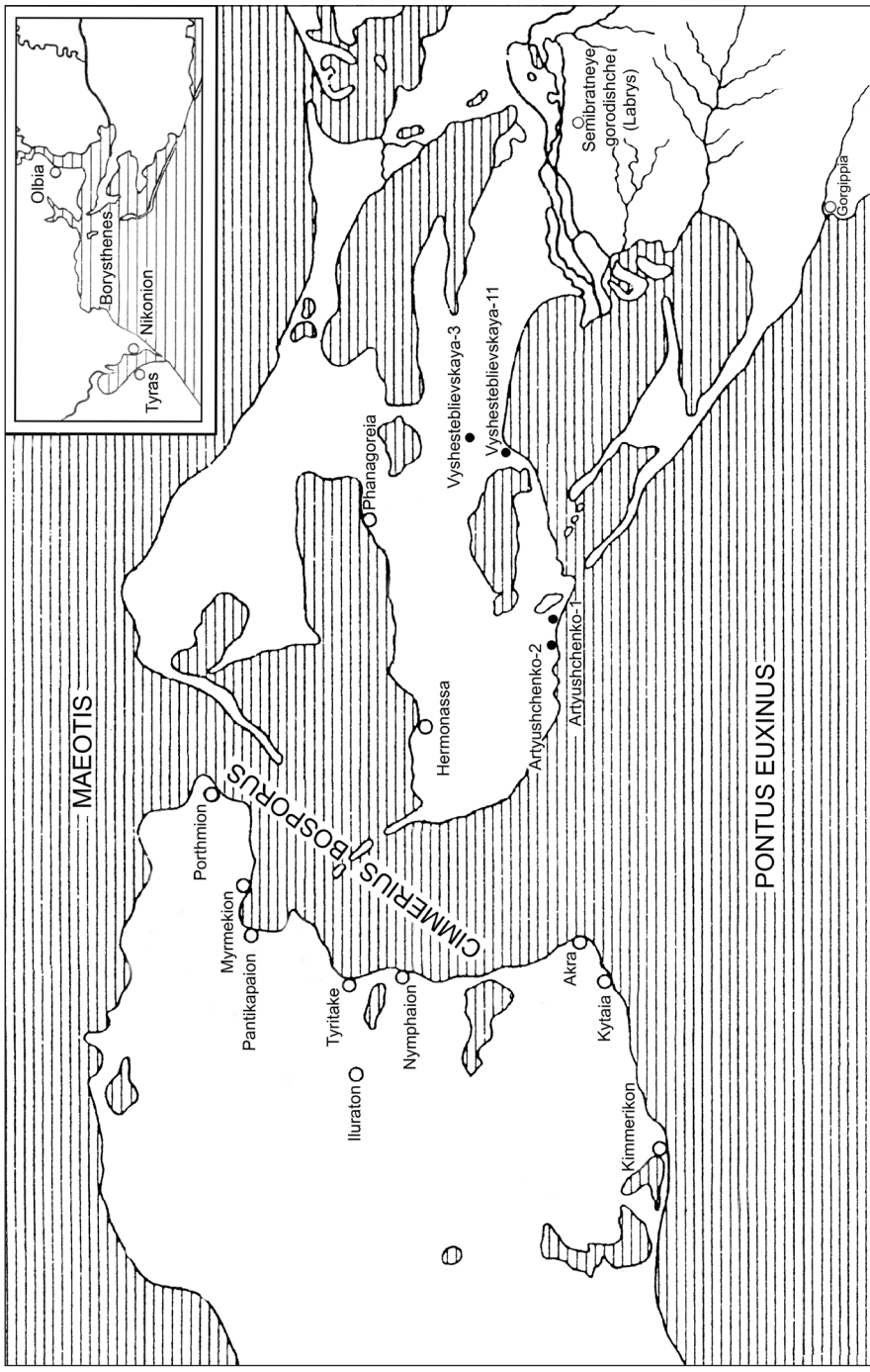
Fig. 3. Artyushchenko I. Finds from pits from the 2nd–3rd centuries AD:
1 – bronze finger-ring; 2 – bronze fibula; 3 – fragment of red-glazed bowl;
4–8 – fragments of hand-made pottery; 9 – terracotta figurine; 10 – clay weight.



Fig. 4. Artyushchenko I. Ground-dwelling (no. XIV) from the second part of the 4th century AD. View from the North-West.



Fig. 5. Artyushchenko I. Ground-dwelling (no. XIV) from the second part of the 4th century AD. View from the South-East.



Abbreviations

- KSIIMK = КСИИМК* – *Краткие сообщения Института истории материальной культуры [Kratkije soobshchenija Instituta istorii material'noj kultury]*
- MIA = МИА* – *Материалы и исследования по археологии СССР [Materialy i issledovanija po archeologii SSSR]*
- OAK = OAK* – *Отчет императорской Археологической комиссии [Otch'ot imperatorskoj Arkheologicheskoi komissii]*
- SA = СА* – *Советская археология [Sov'etskaja arkheologija]*
- VDI = ВДИ* – *Вестник древней истории [V'estnik drevnej istoriji]*

CONSPECTUS

DIRK L. COUPRIE	
The Paths of the Celestial Bodies According to Anaximenes	5
MARIA KAZANSKAYA	
A Ghost Proverb in Herodotus (6. 129. 4)?	33
З. А. БАРЗАХ	
Использование разговорных идиом в трагедиях Софокла	53
SERGEY V. KASHAEV, NATALIA PAVLICHENKO	
Letter on an Ostrakon From the Settlement of Vyshesteblievskaya-3	61
ANTONIO CORSO	
Retrieving the Aphrodite of Hermogenes of Cythera	80
ARSENIJ VETUSHKO-KALEVICH	
<i>Batāvi</i> oder <i>Batāvi</i> ? Zu Luc. <i>Phars.</i> I, 430–440	90

ARCHAEOLOGICA

DMITRIJ CHISTOV	
Investigations on the Berezan Island, 2006–2013 (Hermitage Museum Archaeological Mission)	106
VLADIMIR KHRSHANOVSKIY	
An Investigation of the Necropoleis of Kytaiion and the Iluraton Plateau (2006–2013)	111
OLGA SOKOLOVA	
The Nymphaion expedition of the State Hermitage Museum (2006–2013)	121
ALEXANDER BUTYAGIN	
Excavations at Myrmekion in 2006–2013	127

Статьи сопровождаются резюме на русском и английском языке
Summary in Russian and English

MARINA JU. VAKHTINA Porthmion Archaeological Expedition of the Institute for History of Material Culture, RAS – Institute of Archaeology, NASU	135
SERGEY V. KASHAEV The Taman Detachment of the Bosporan Expedition of IIMK RAS, 2006–2013	140
YURIJ A. VINOGRADOV Excavations at the Settlement of Artyushchenko–I (Bugazskoe) on the Taman Peninsula	157
VLADIMIR GORONCHAROVSKIY The Townsite of Semibratneye (Labrys) Results of Excavations in 2006–2009	161

DISPUTATIONES

SANDRA FAIT Peter Riedlberger, <i>Domninus of Larissa, Encheiridion and Spurious Works.</i> <i>Introduction, Critical Text, English Translation, and Commentary</i>	173
Key Words	175
Правила для авторов	177
Guidelines for contributors	179