



**Josef Ott, Lithografirte Abbildungen zum zweiten Buche des "System der Fechtkunst" à la contrepointe auf den Hieb und Stich, mit dem Säbel, Spadon oder Palasch, für den Einzelkampf Mann gegen Mann (Olmütz: Buchdruckerei von Franz Slawik, 1853).**

260x150 mm, thickness: 4 mm. 43 plates.

DOI: 10.36950/apd-2022-001

Publication Date: 27.05.2022

This file is made available for research purpose by the owner (Festetics family), according to a research agreement with Acta Periodica Duellatorum Association (2022).

*APD* is an open access journal. This means that all content is freely available to the user without charge in accordance with the [BOAI definition of open access](#). Users are allowed to read, download, copy, and use the content for any lawful purpose, without asking prior permission from the publisher or the author. The content is licensed under the Creative Commons Attribution License ([CC BY 4.0](#)).

47

1917/2

Lithografirte Abbildungen

zum zweiten Buche des

„System der Fechtkunst“  
à la contrepoincte

auf den

Hieb und Stich, mit dem Säbel, Spadon oder Palasch, für den Einzelkampf Mann  
gegen Mann.

V o n

JOSEF OTT.

k. k. österreichischer Lieutenant im 57. Baron Haynau Lin. Inf. Regimente, Lehrer der Fechtkunst und der Militärgymnastik  
an der k. k. Artillerie-Academie zu Olmütz.



600 1917/2

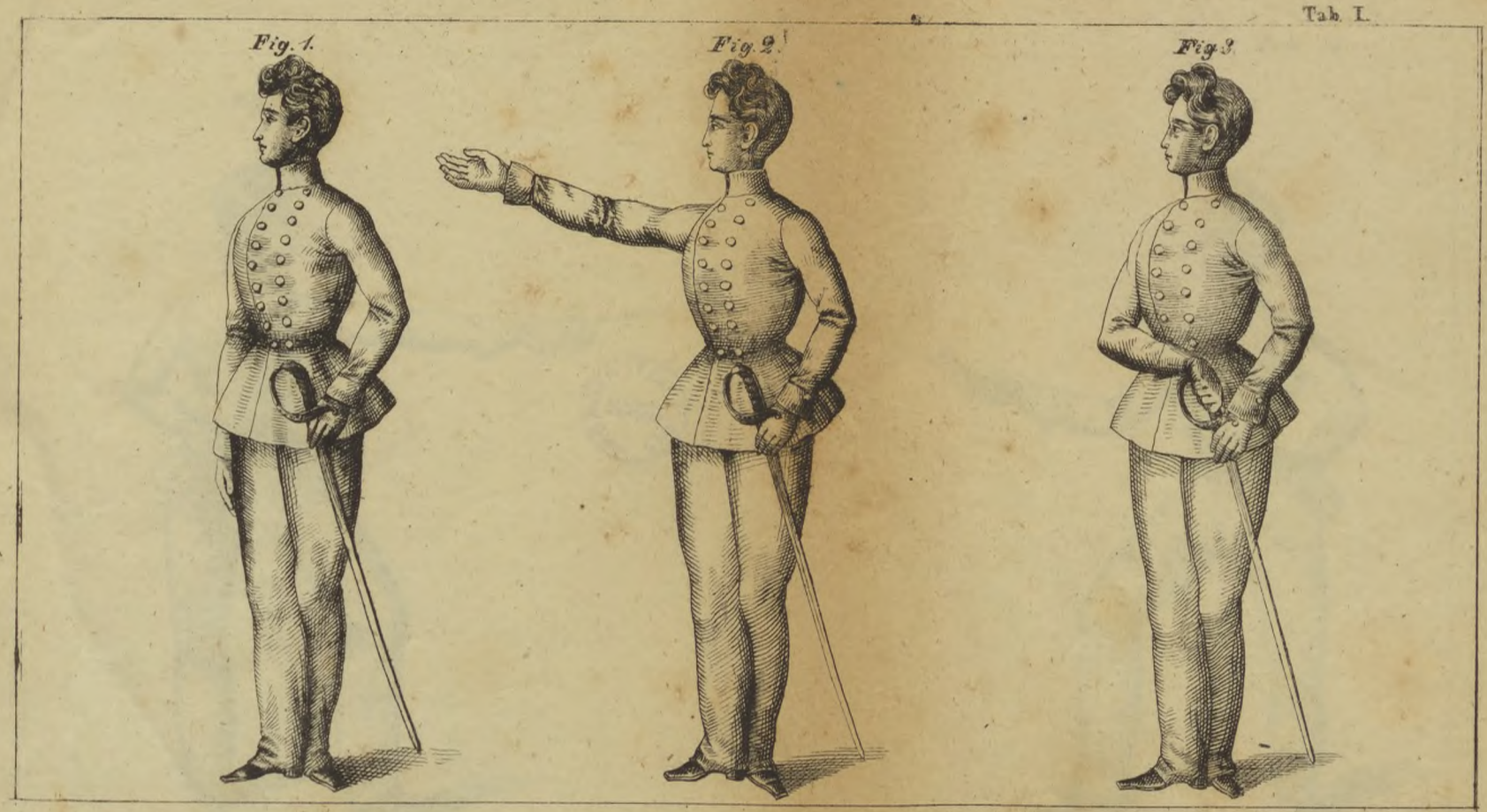




Fig. 4.

Fig. 5.



KESZTIRÉLYI HELY  
KÖNYVTÁR



Fig. 6.



Fig. 7.



KEZHELYI HELKON  
KÖNYVTÁR



Fig. 8.



Fig. 9.



KEZVESELYI HATÁR  
KÖNYVTÁR





KERÉNYI  
SCHYER

Fig. 10.

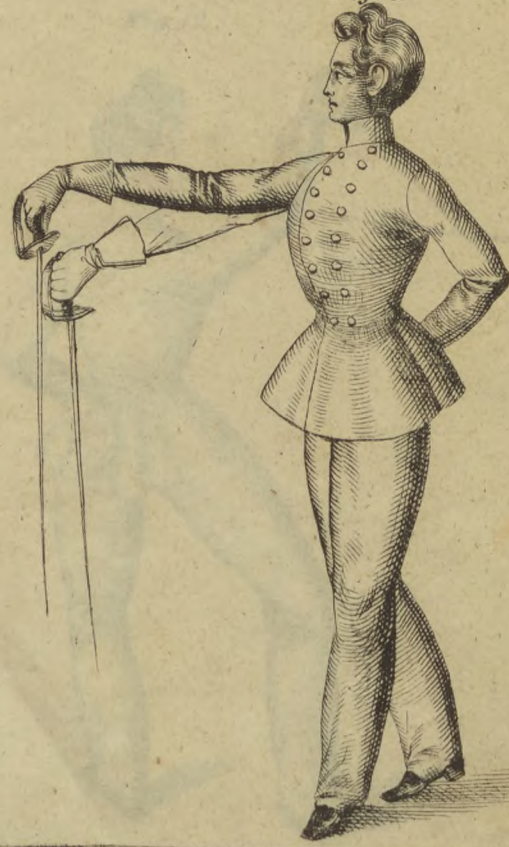
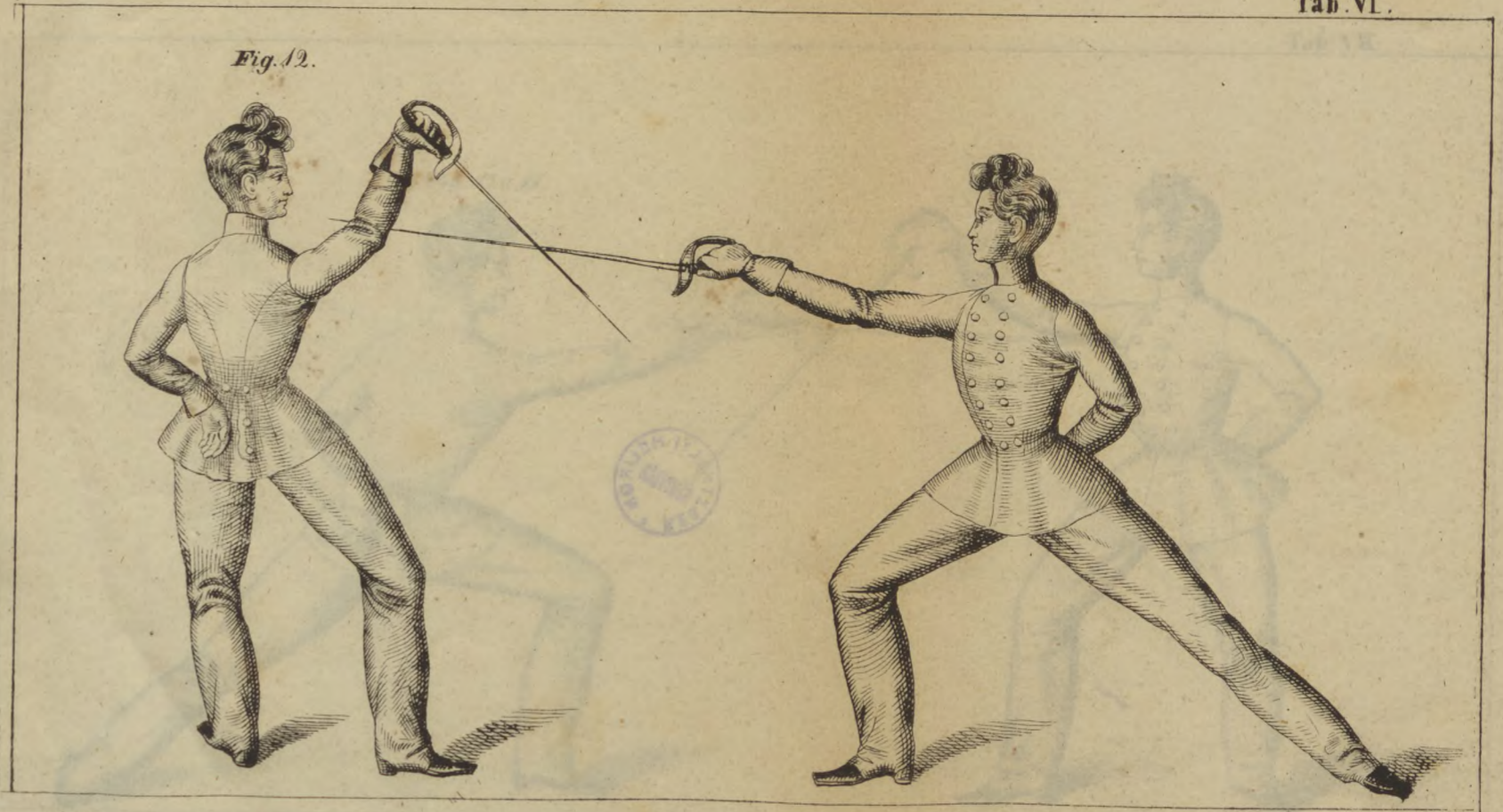


Fig. 11.





Fig. 12.



KEZTHELYI  
KÖNYVTÁR

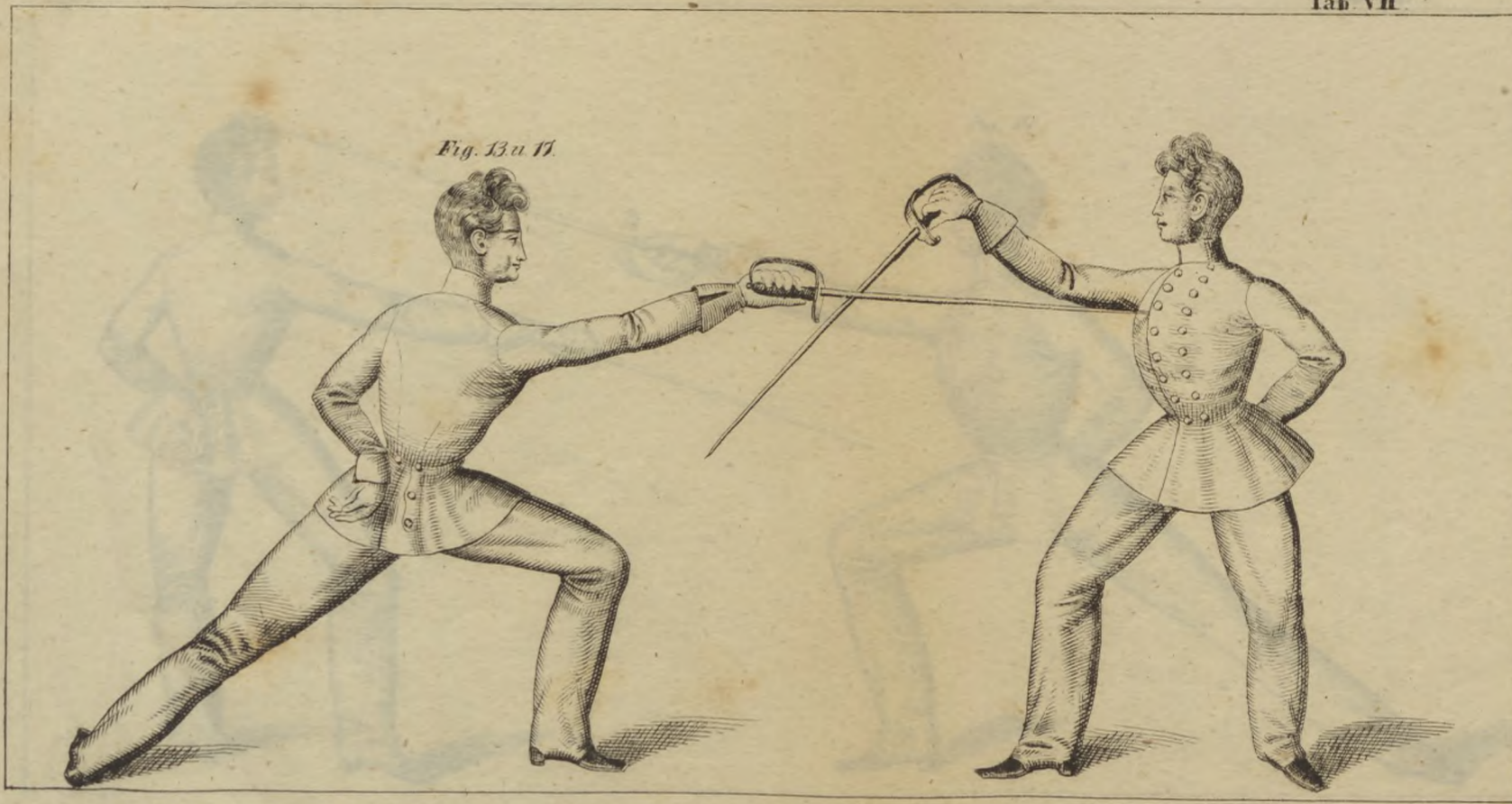
KEZTHELYI  
KÖNYVTÁR





KEZTITHELYI HELYKÖNYV  
MAGYAR

Fig. 13 u 14

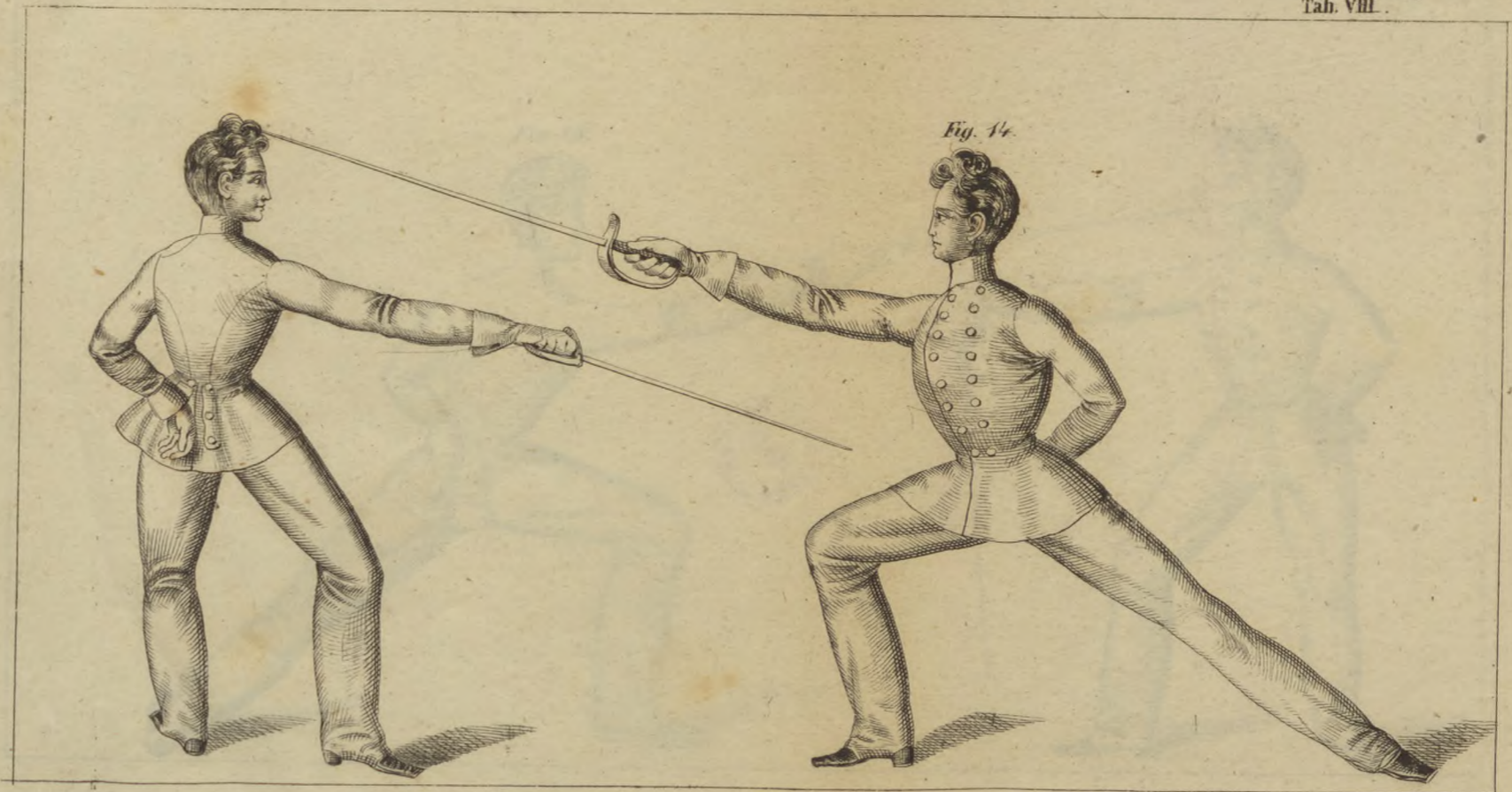




117 21



Tab. VIII.







ROYAL INSTITUTION  
LONDON

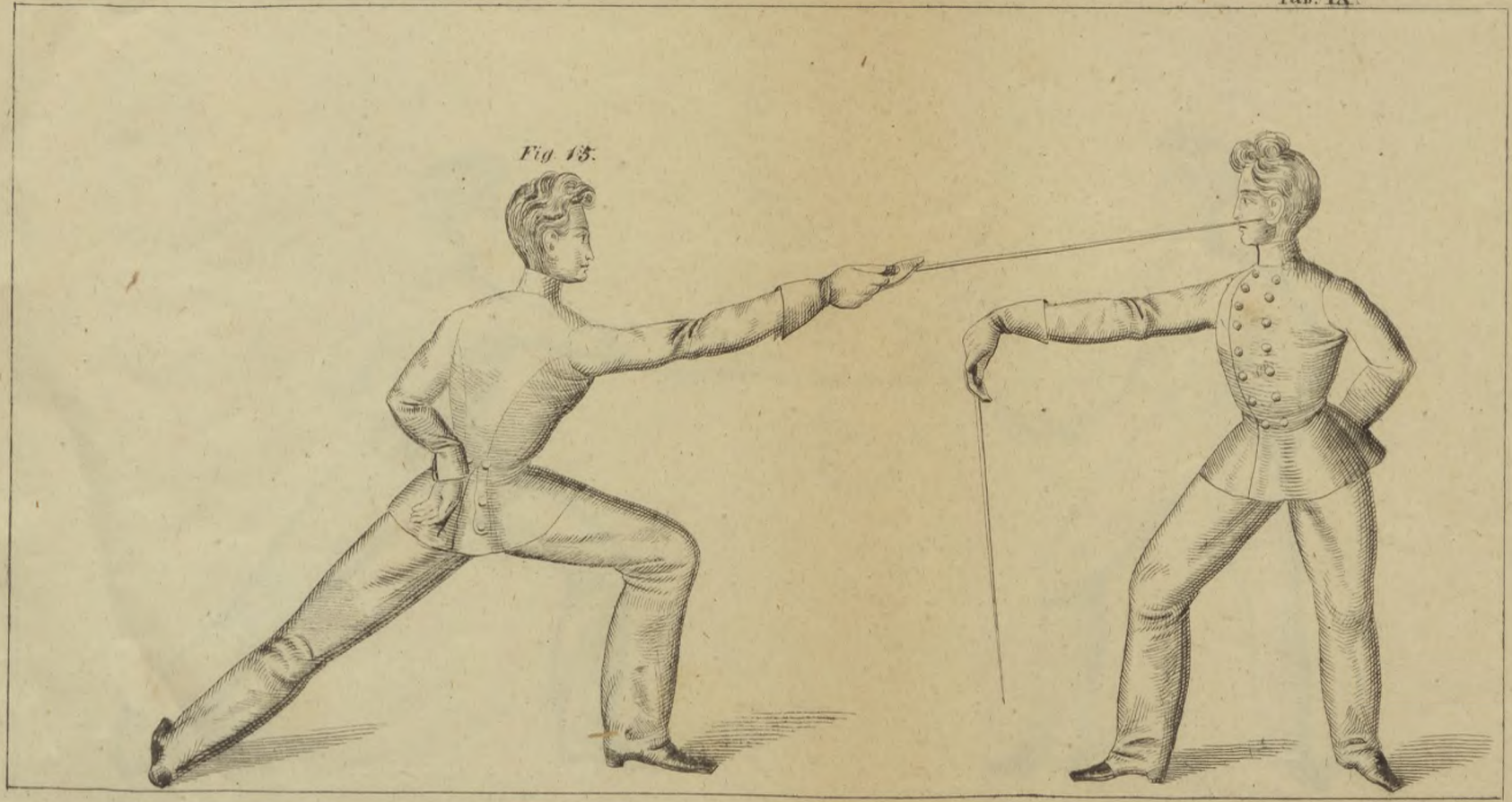
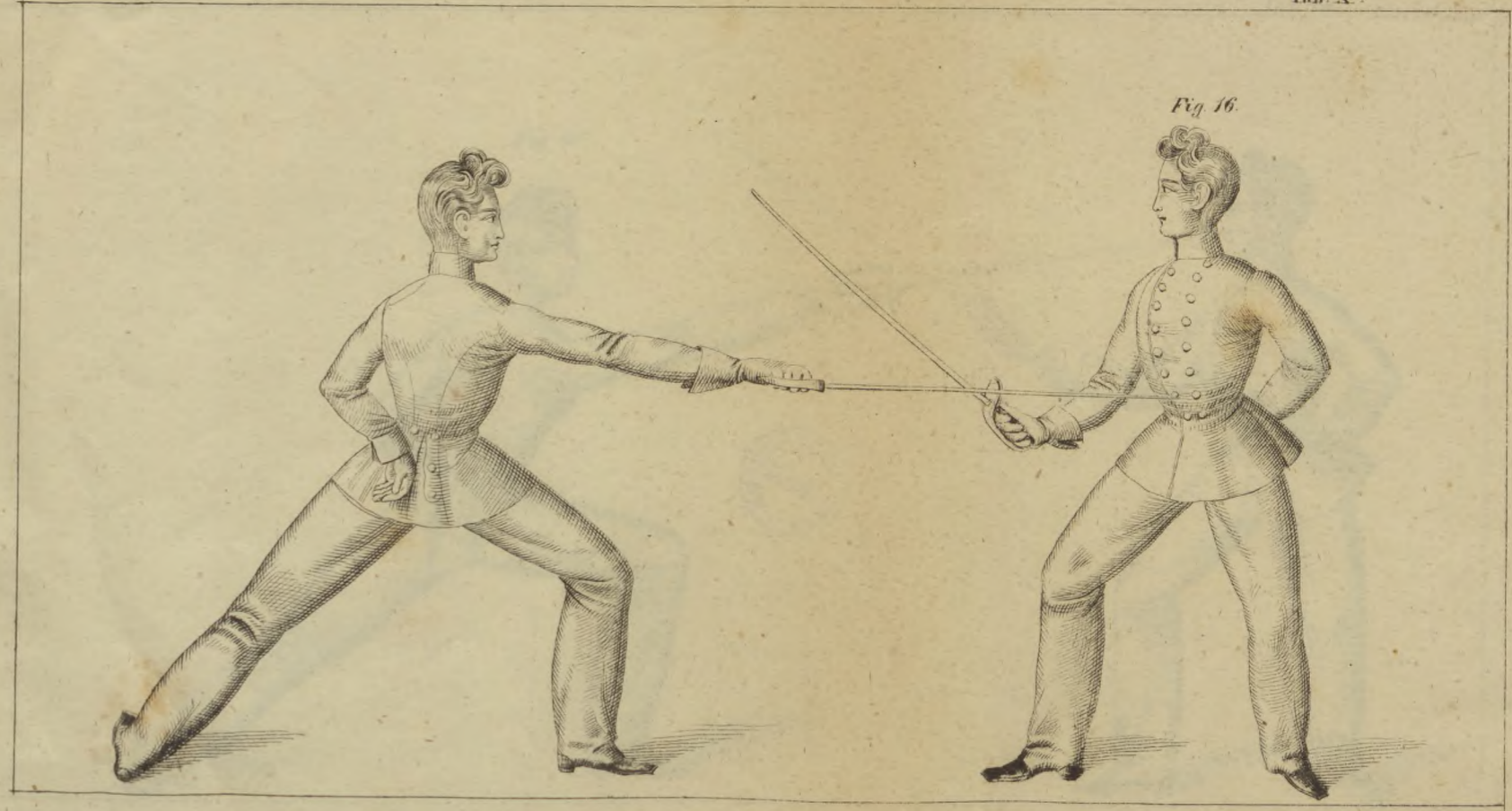


Fig. 15.



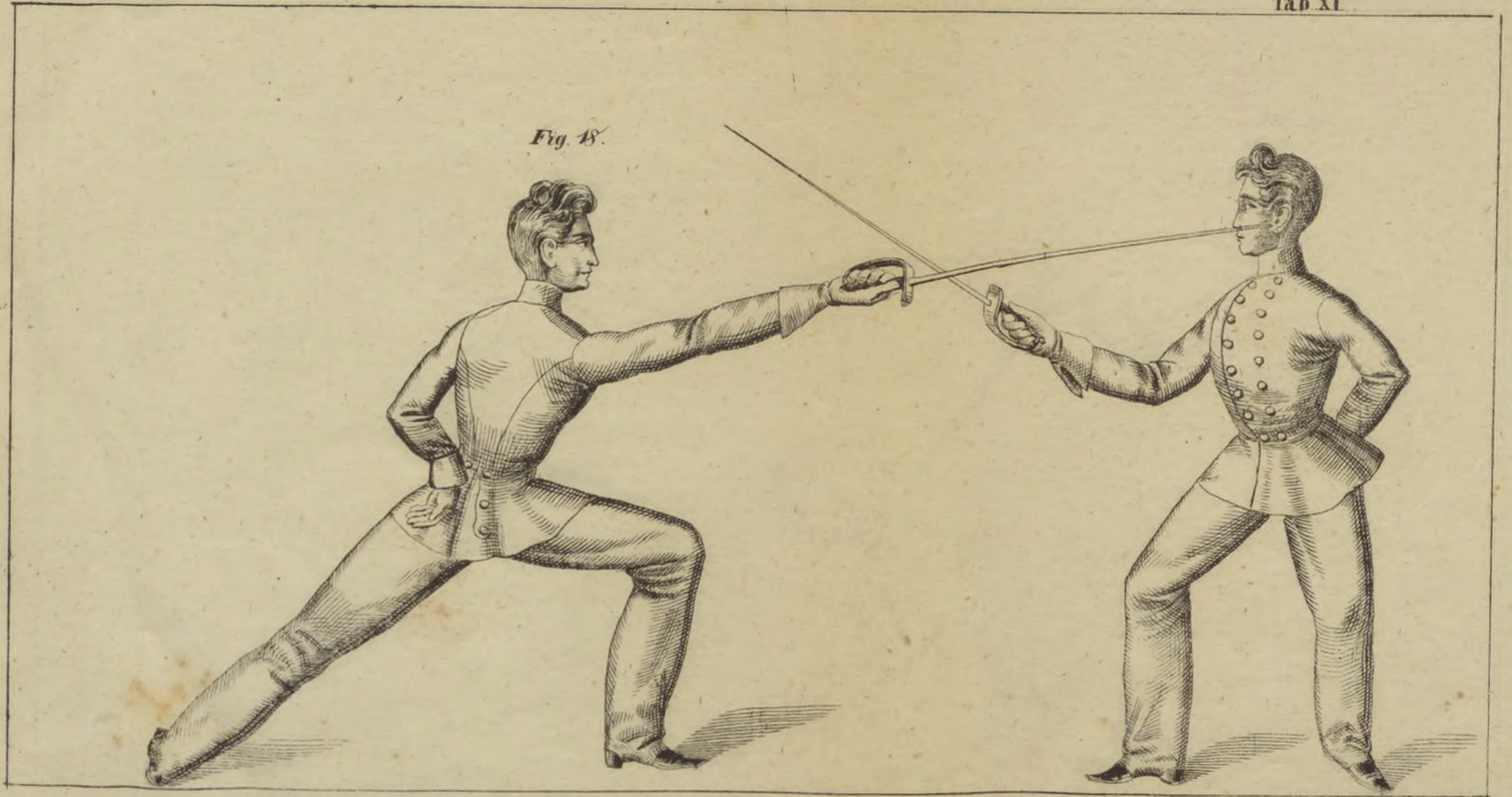
Fig. 16.



KECOKOHAN HELIKON  
1855



Fig. 18.



KEITH HELVI HELKON  
1870





KESEHÉLYI HELIX OM

Fig. 31.

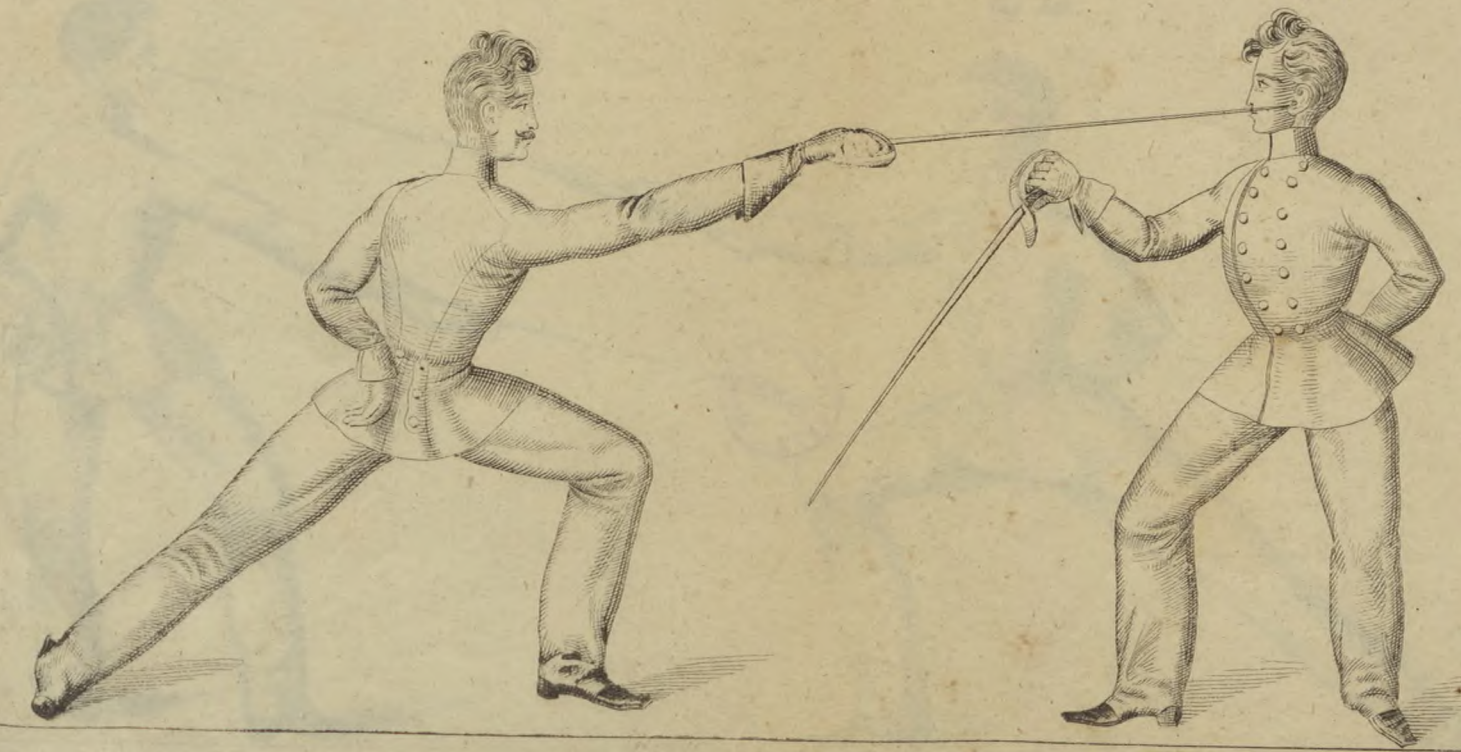
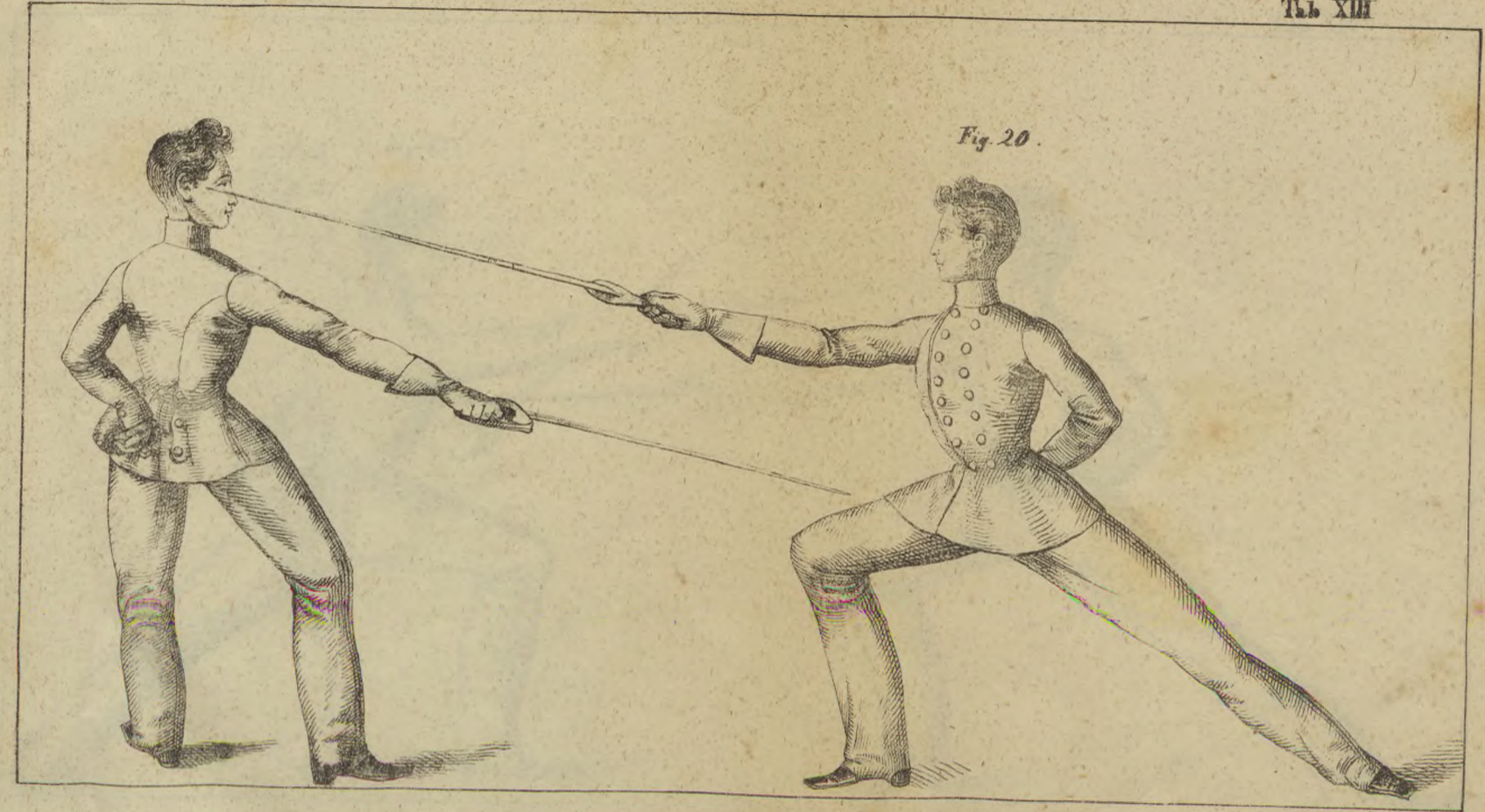




Fig. 20.



KESELYI HELIXON  
KAPPA



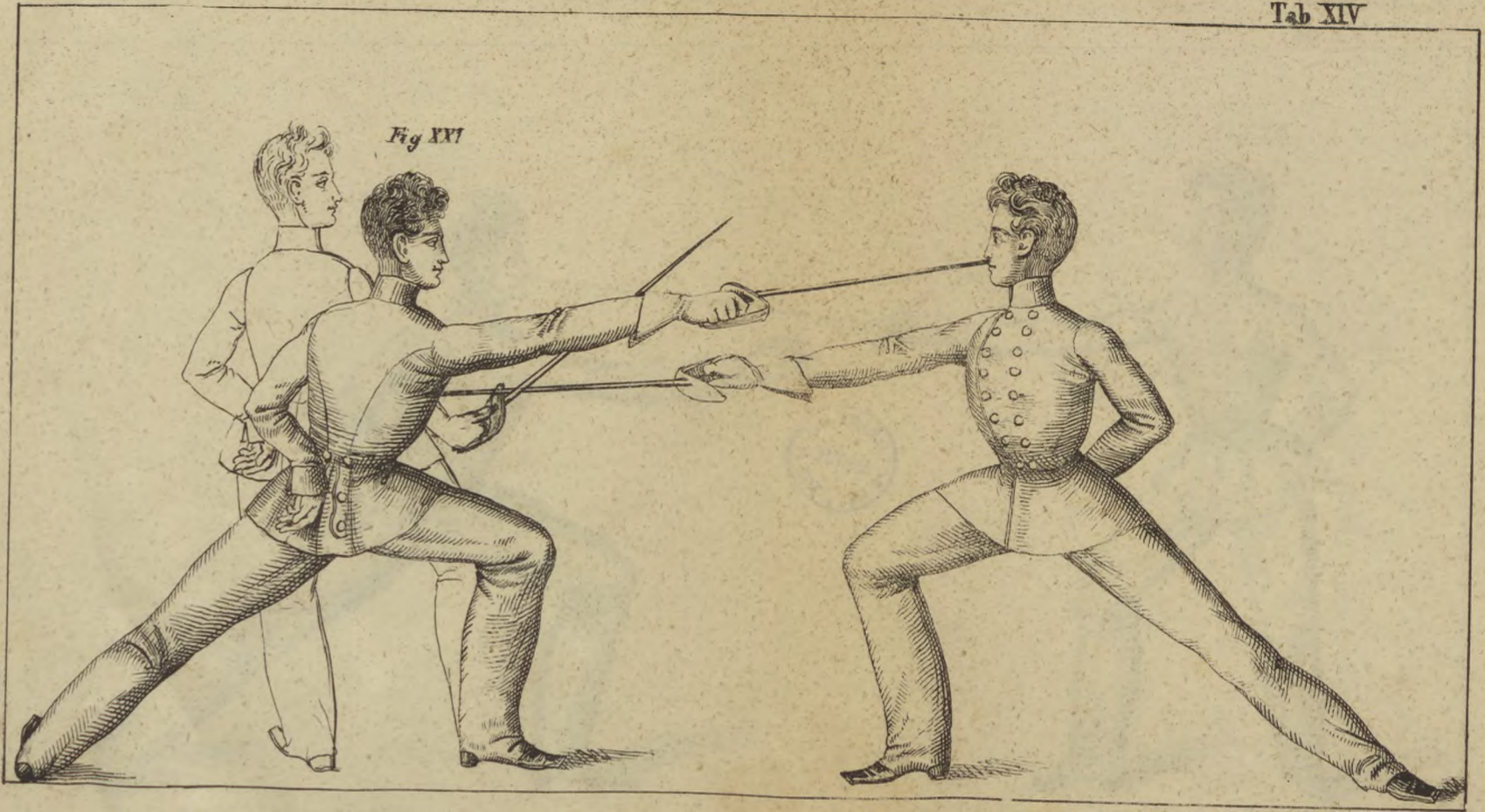
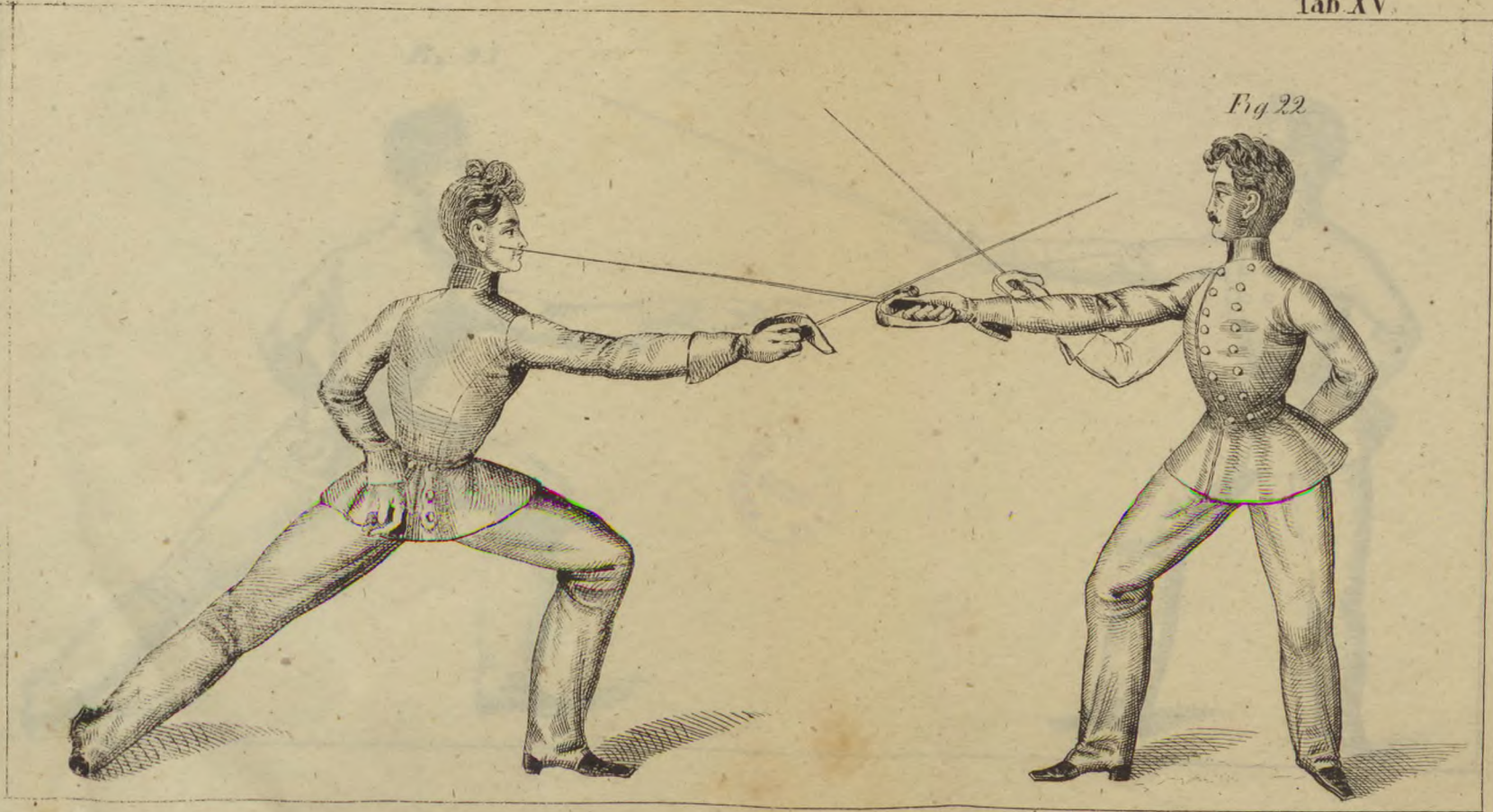


Fig XXI



Fig. 22.



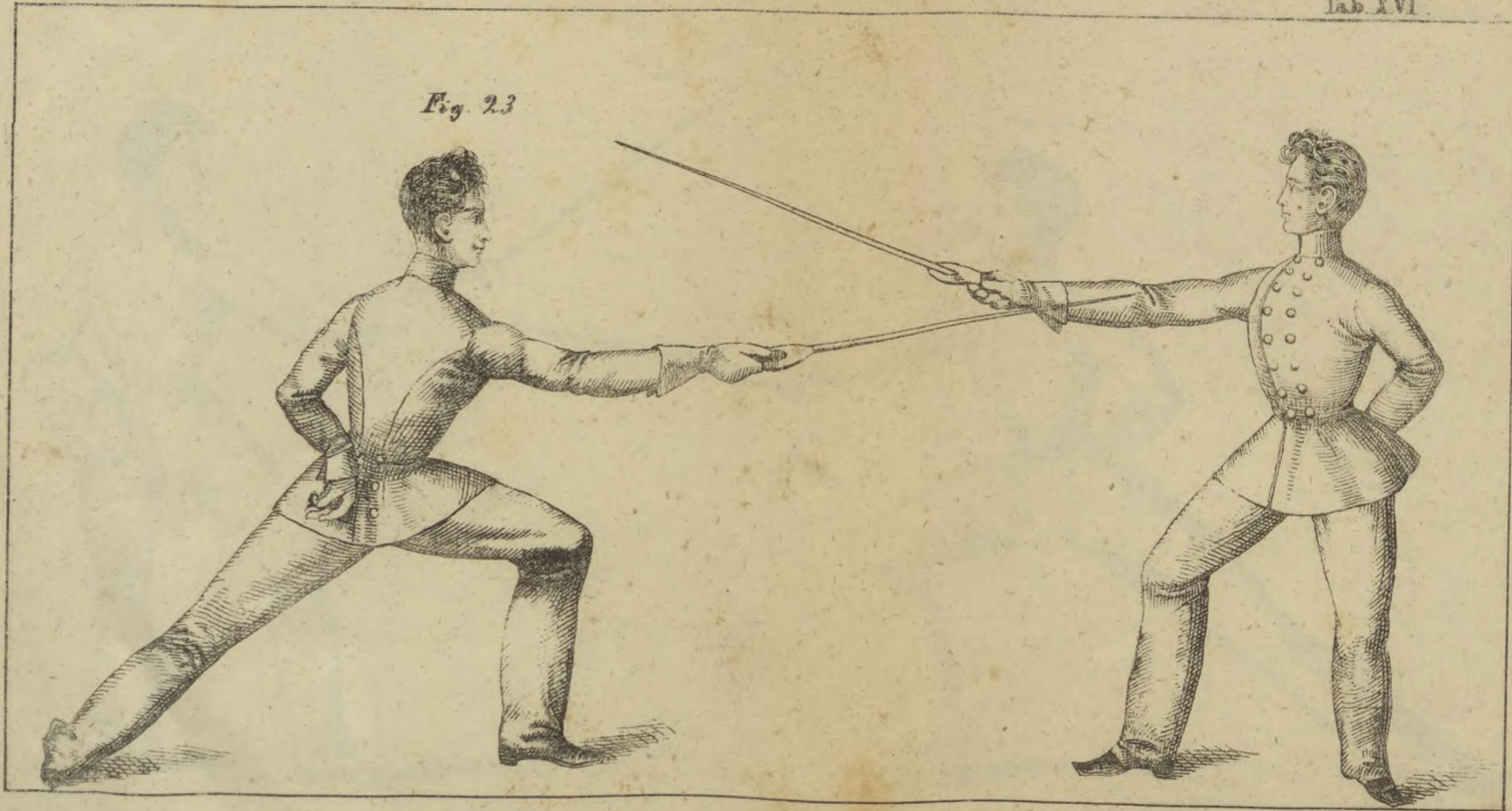
KESTHELYI HELIXON  
KÖNYVTÁR





KEELEY, HELIX, OH.  
1870

Fig. 23





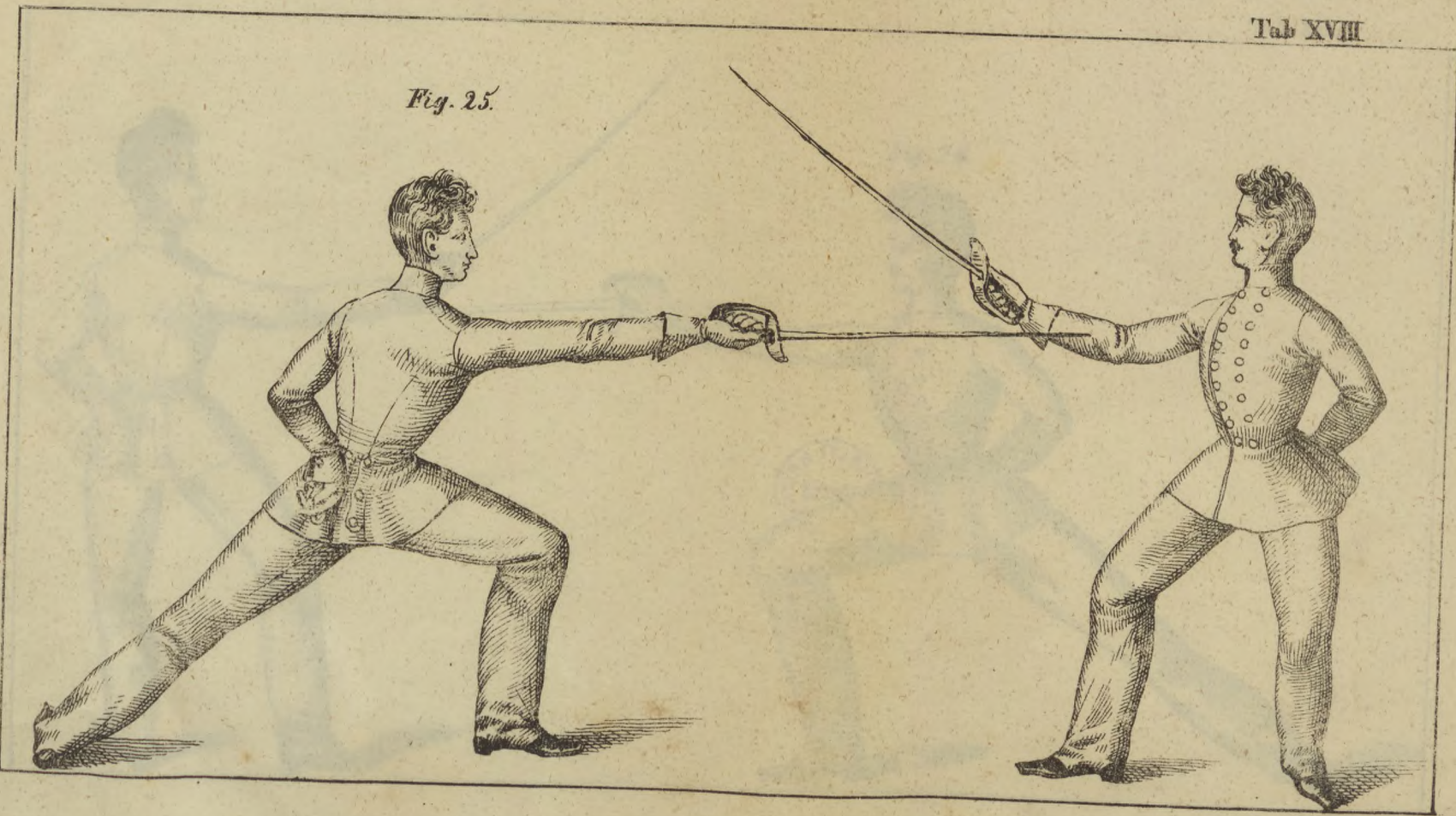


KESKISELTÄ HELSINKI  
1854





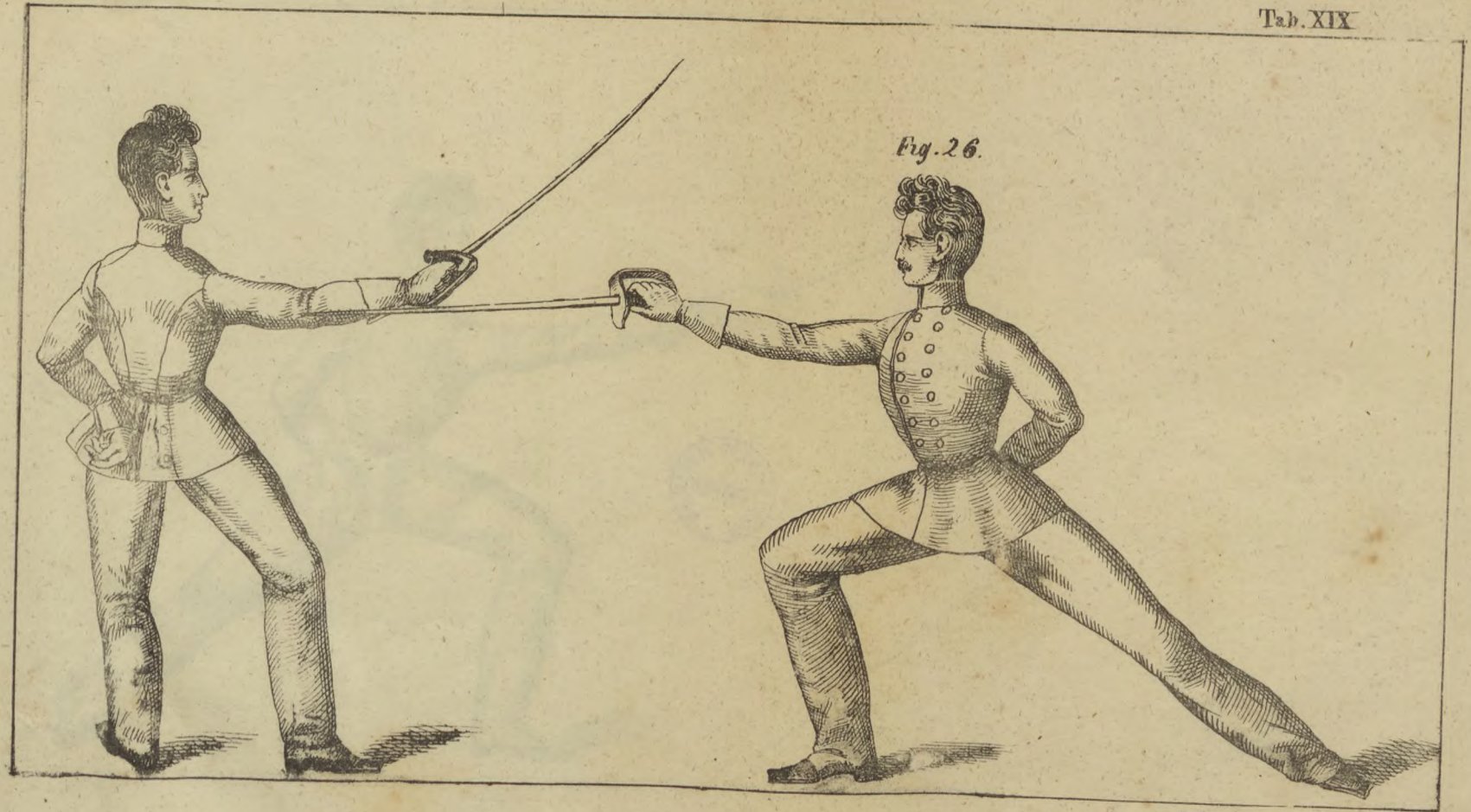
*Fig. 25.*



Tab XVIII



Fig. 26.



KEZTIRTELEK  
 HELYI  
 HELYI





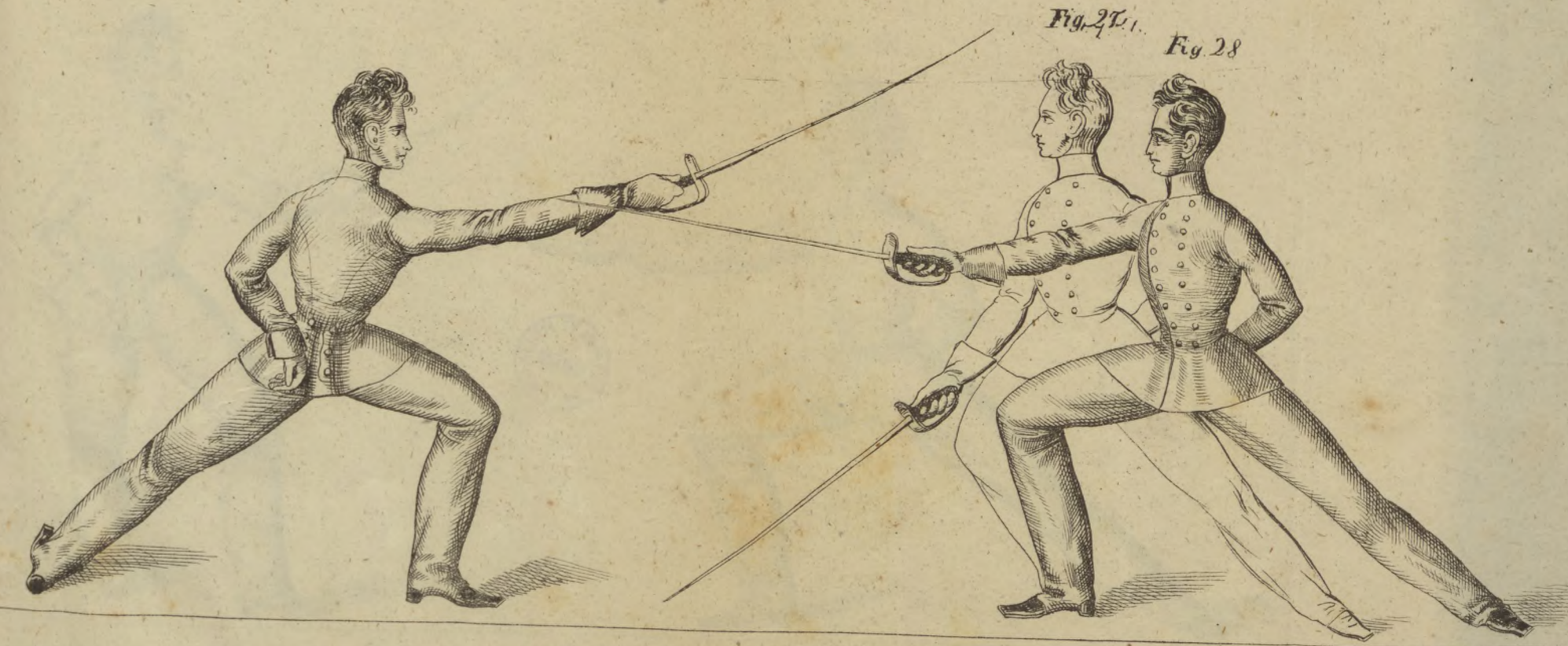
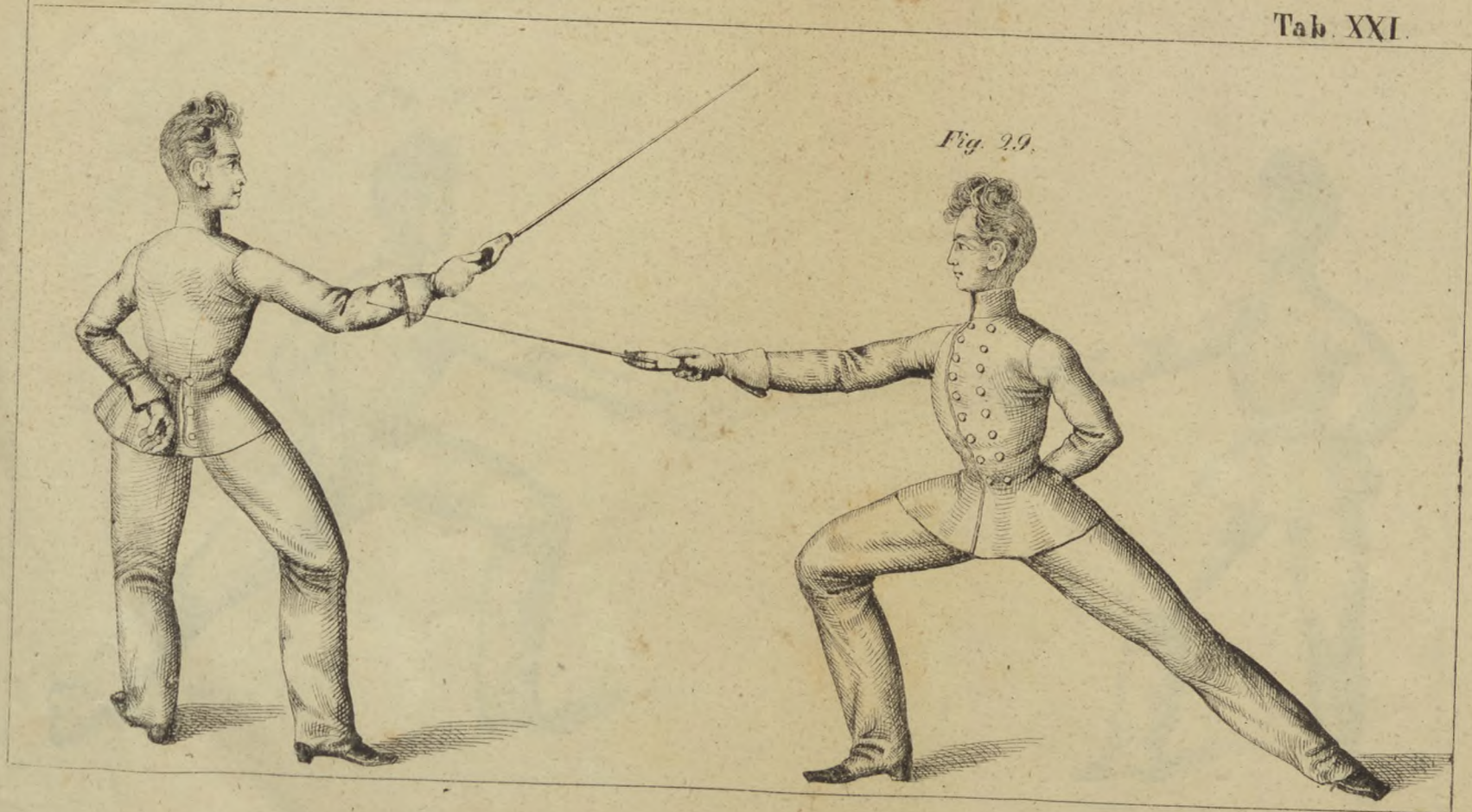


Fig. 27. Fig. 28

KEZHELYI HELIX  
KÖNYVTÁR



Fig. 29.



ETHELY HELIX  
KERTAS



Fig. 30.

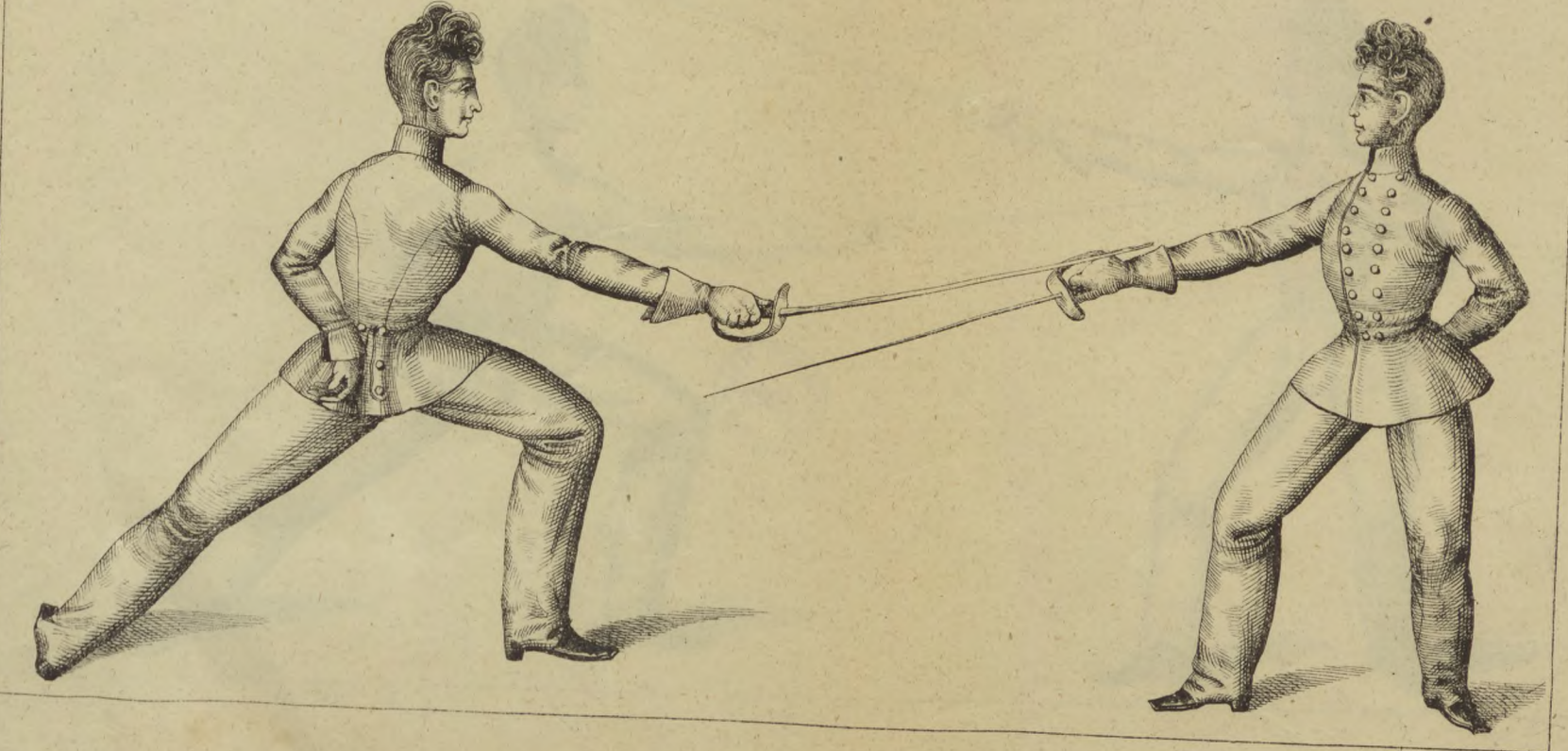
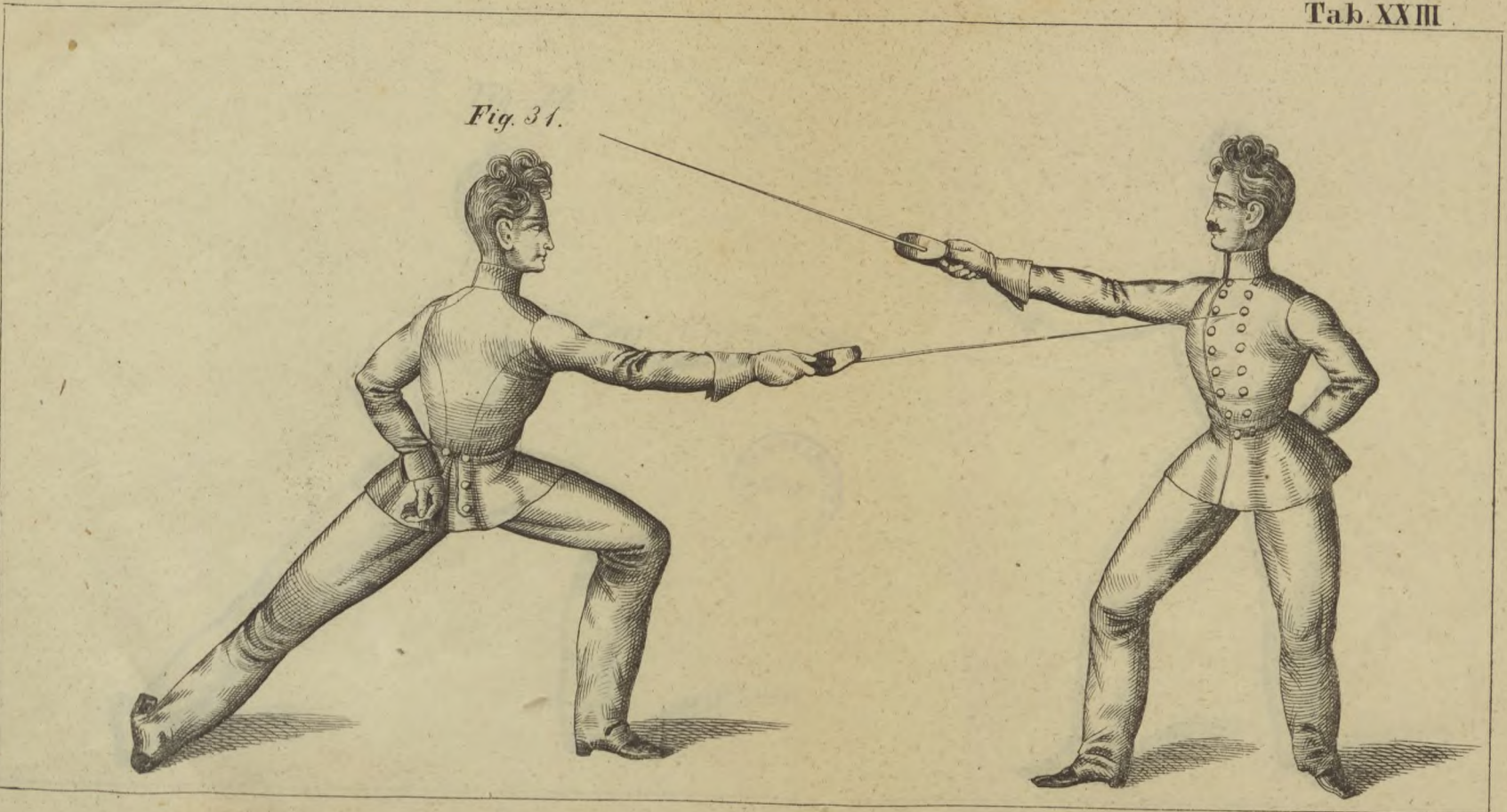




Fig. 31.



KESZTHELYI HELYON  
KÖNYVTÁR



1877-001



Tab XXIV

Fig. 32

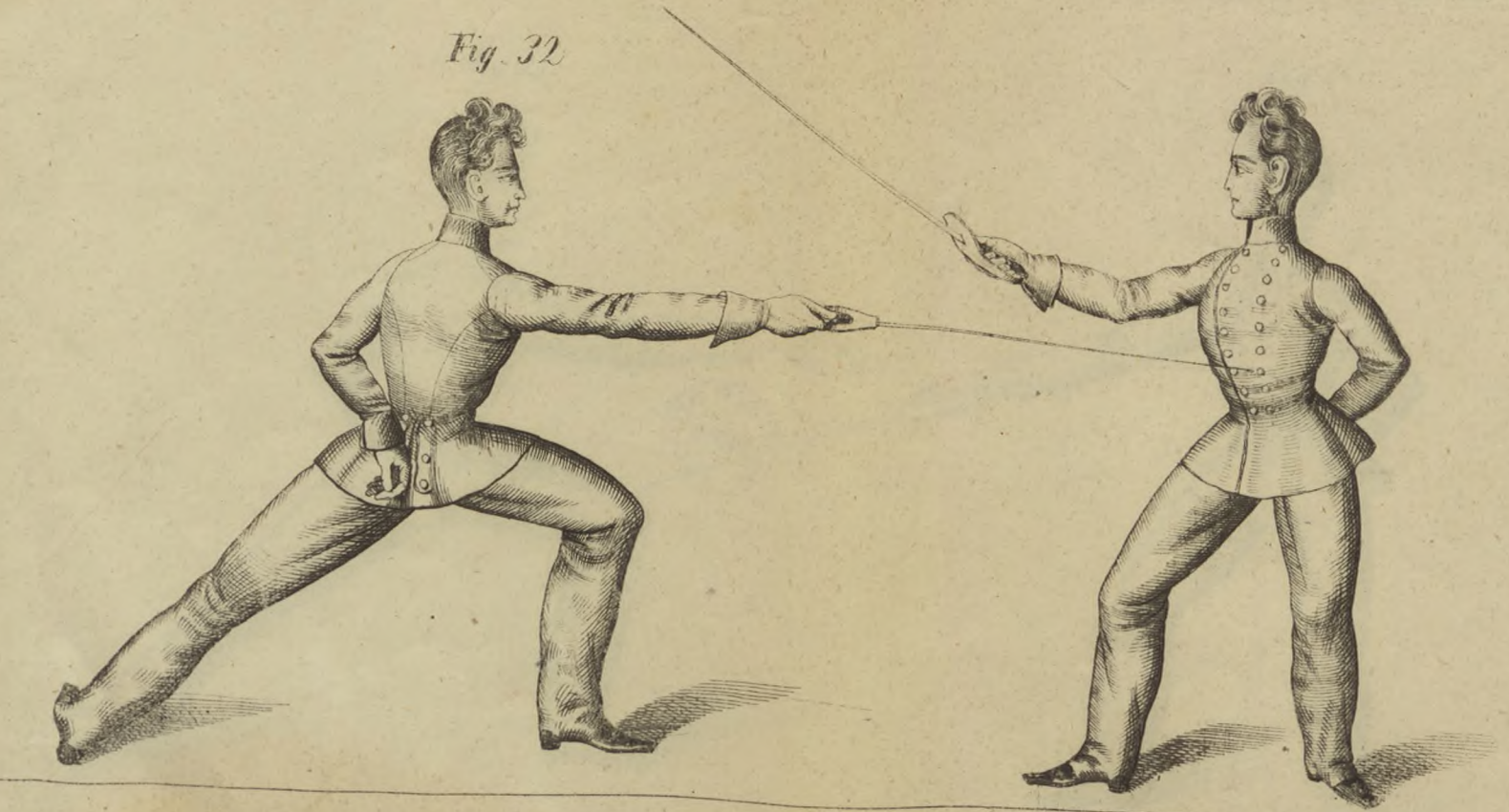




Fig. 33

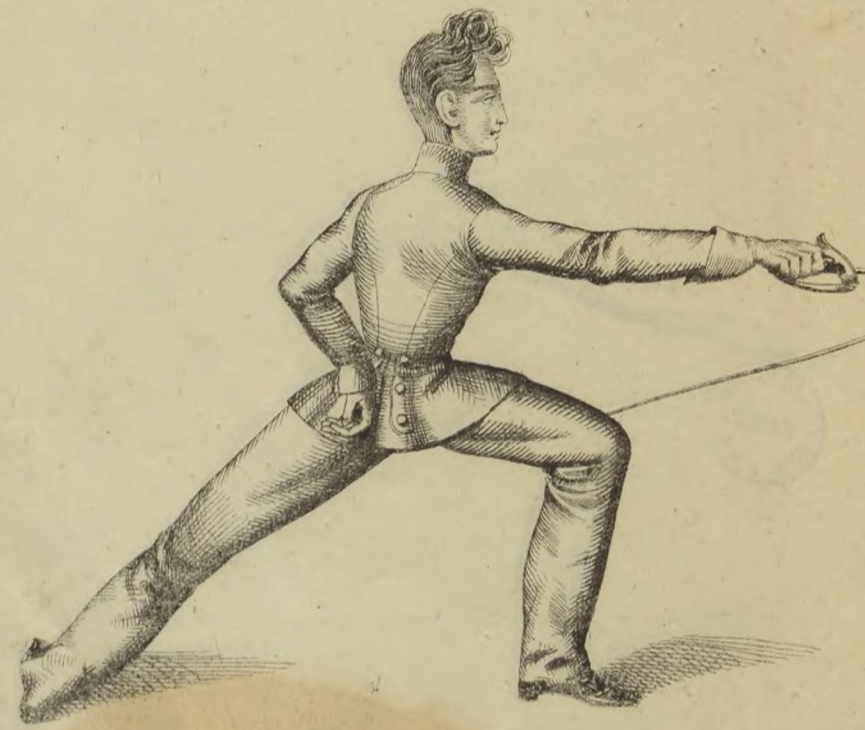


Fig. 34



K. HELYI HELYEN  
KÖNYVTÁR



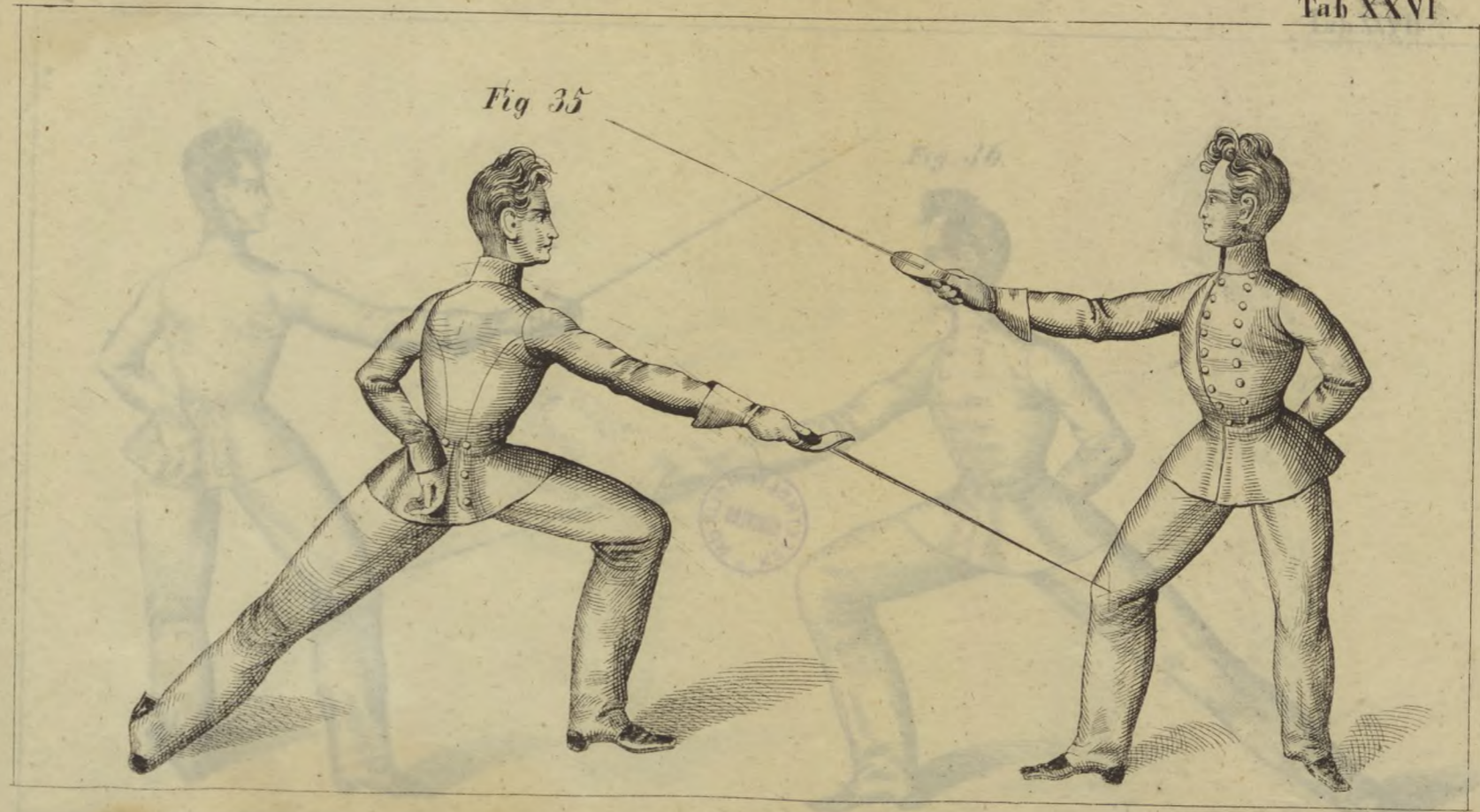


Fig 35

Fig 36

KEZTHELYI HELYEN  
KÖNYVTÁR





1777. d. 17

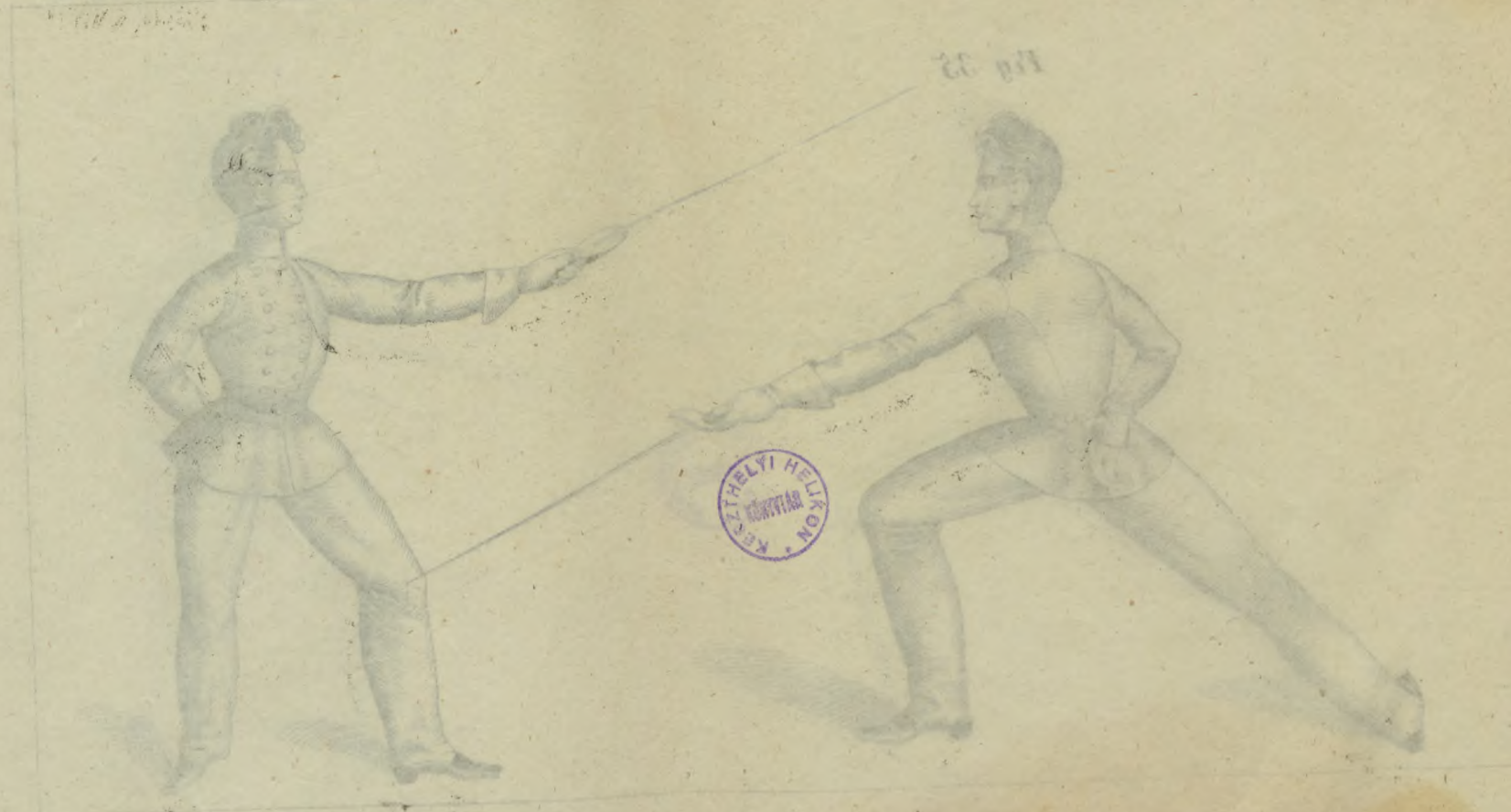


Fig. 35



Tab. XXVII

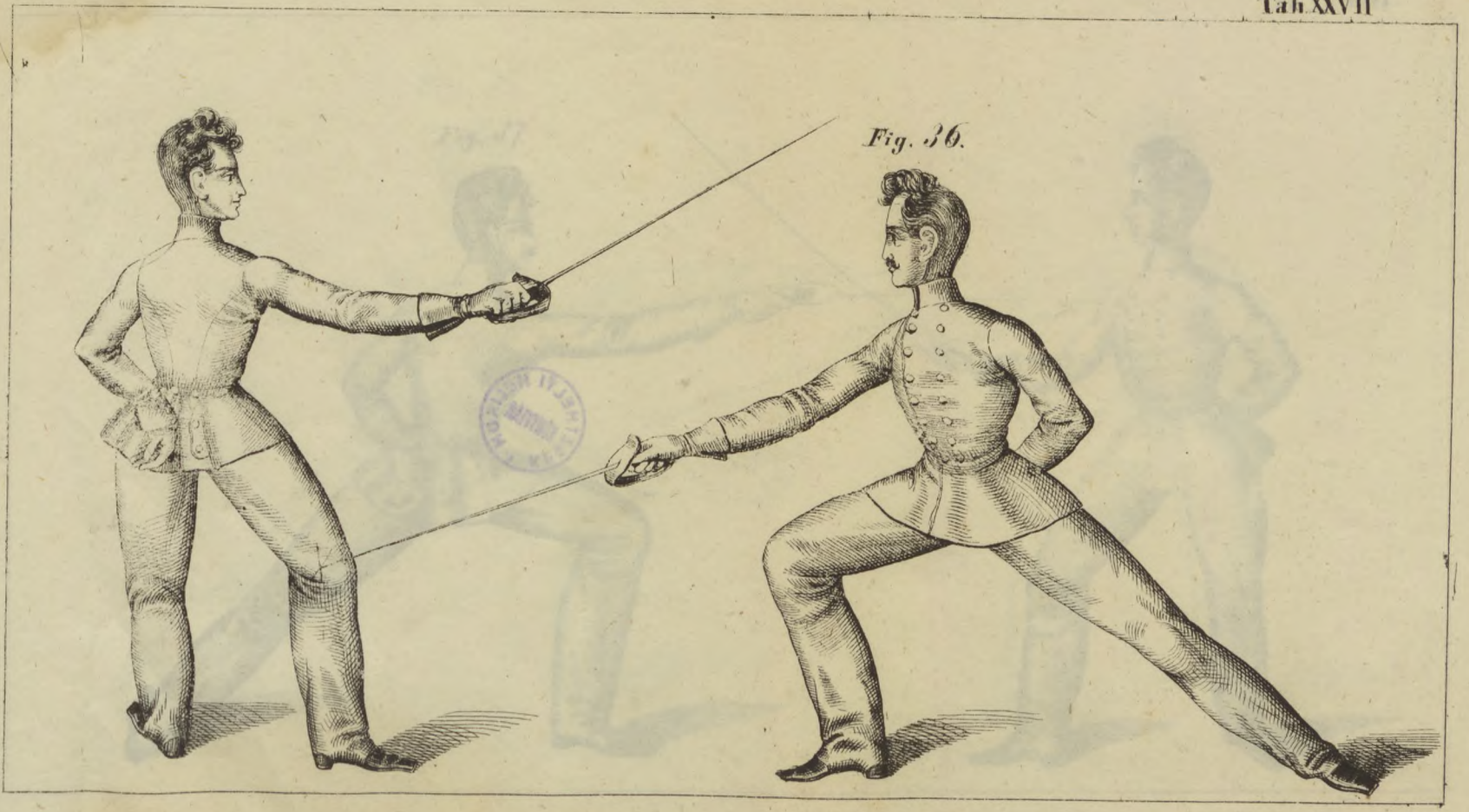


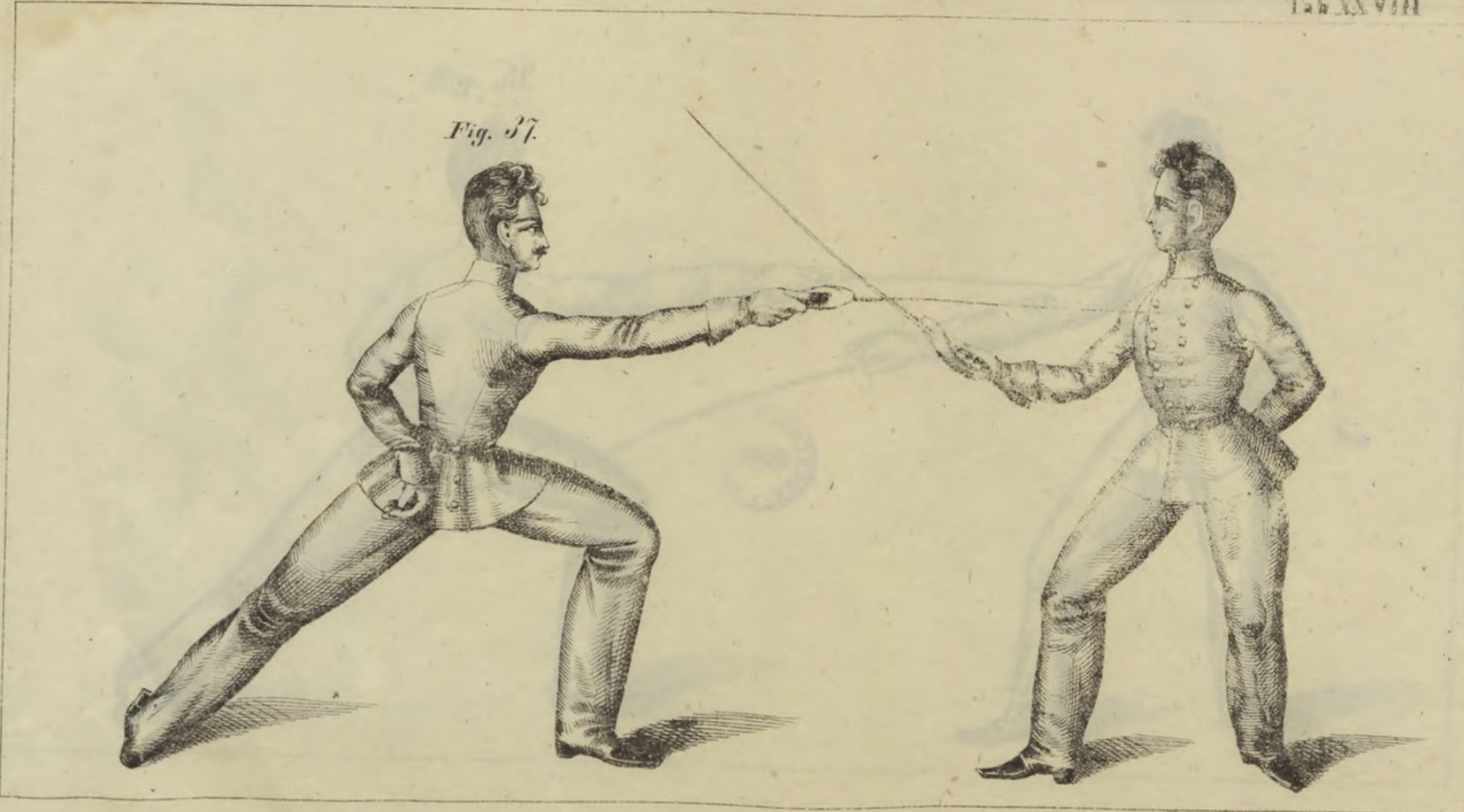
Fig. 36







Fig. 37.





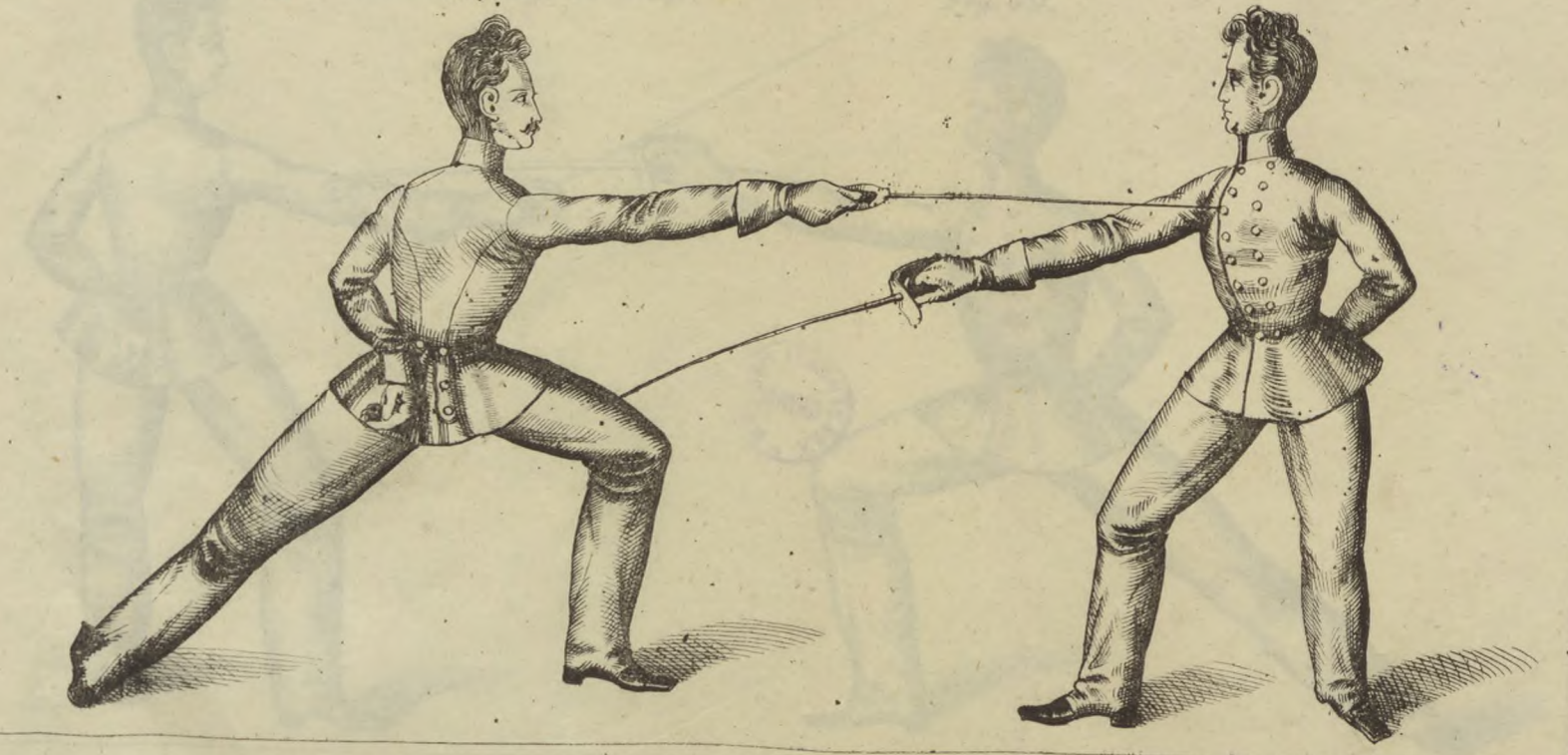
104277



KEZTARTALOM

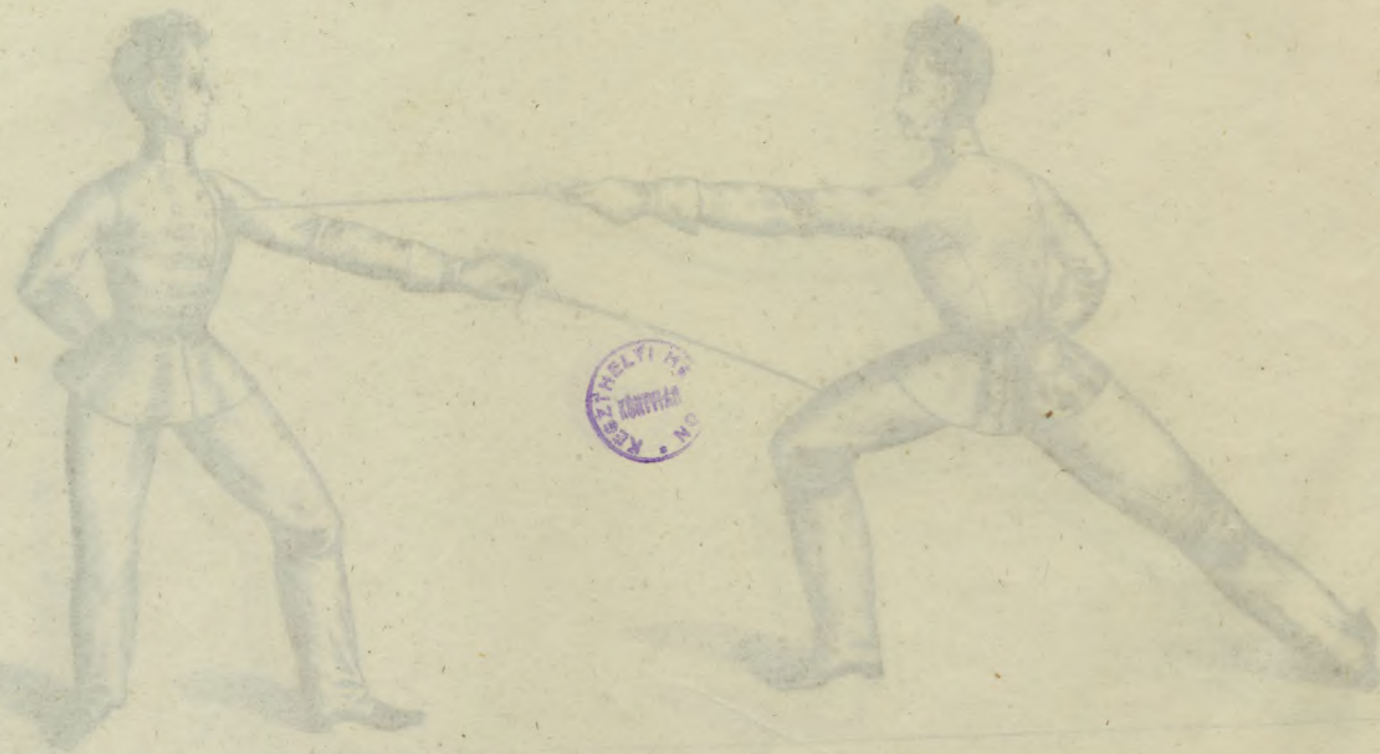
Tab XXIX.

Fig. 38.





7177 457



28. 473

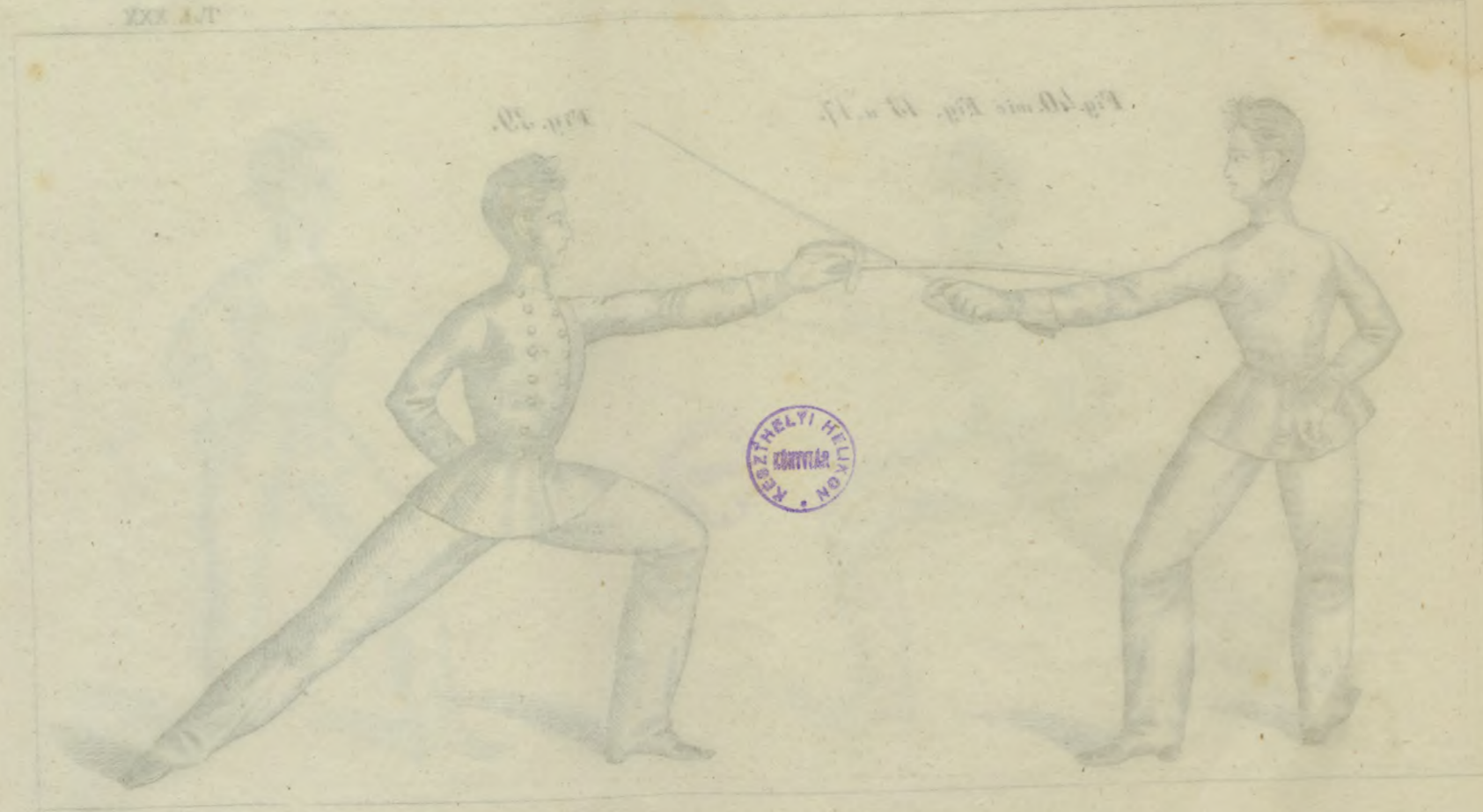
Tab. XXX

Fig. 40. wie Fig. 13 u. 17.

Fig. 39.







KEZTHELYI HELYEN  
KÖNYVTÁRA

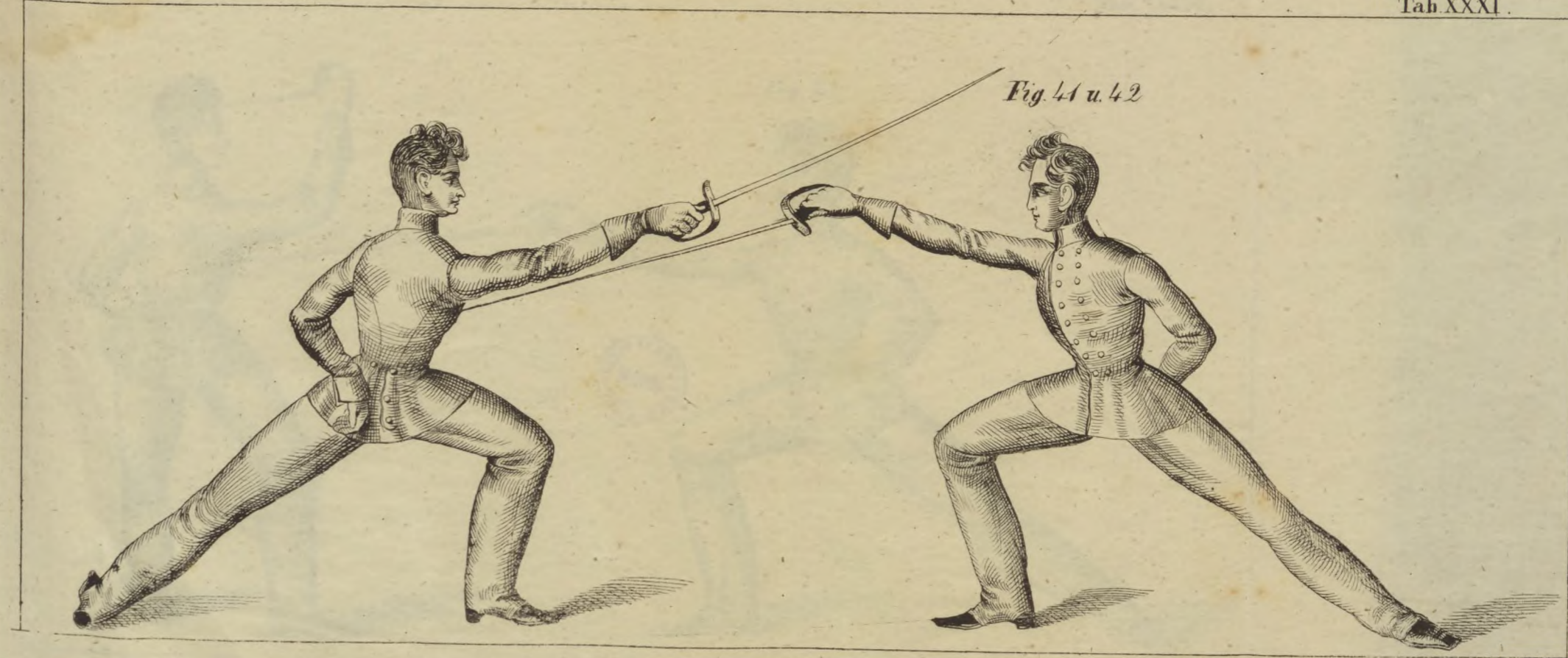


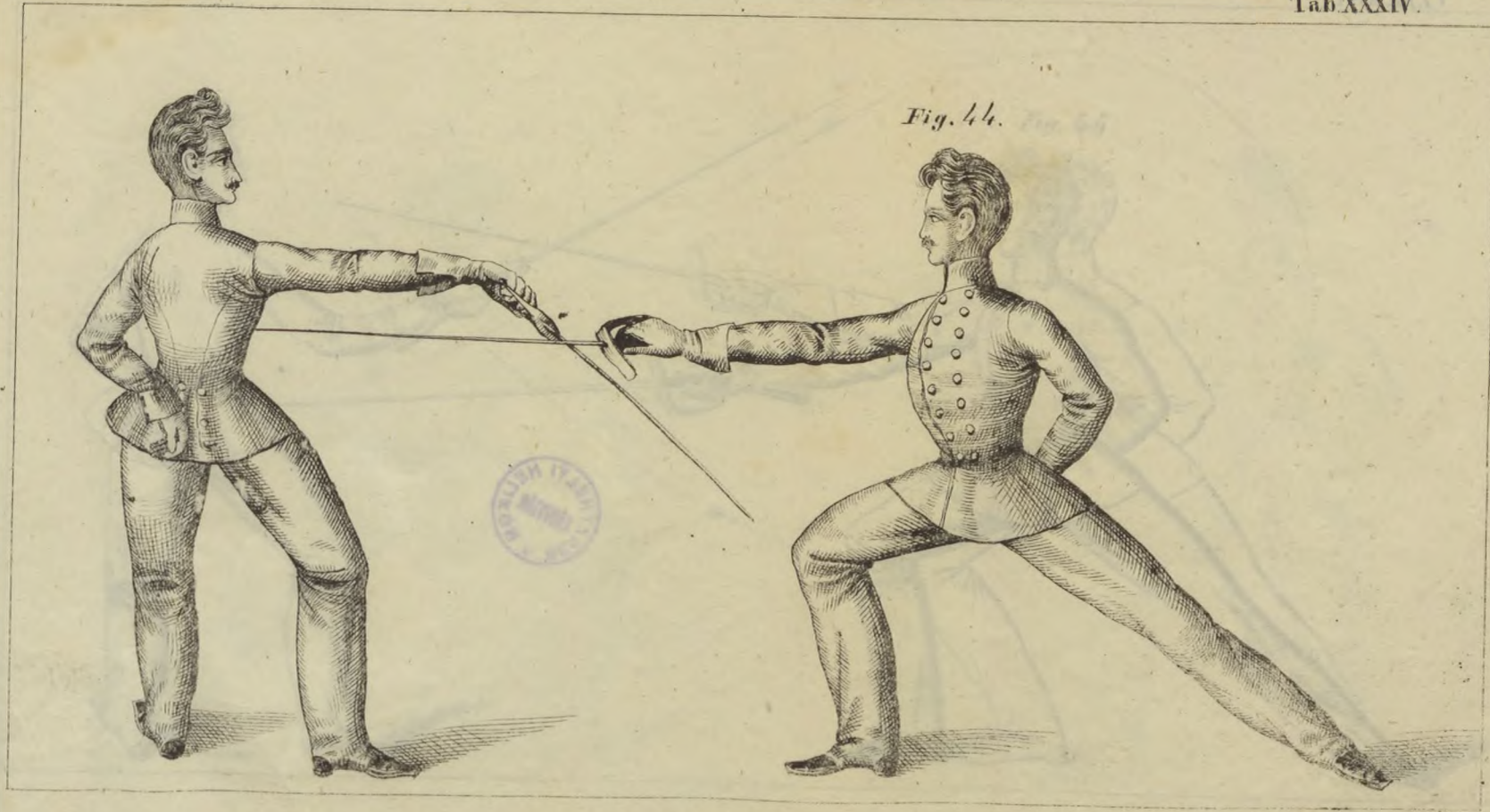


Fig. 43.

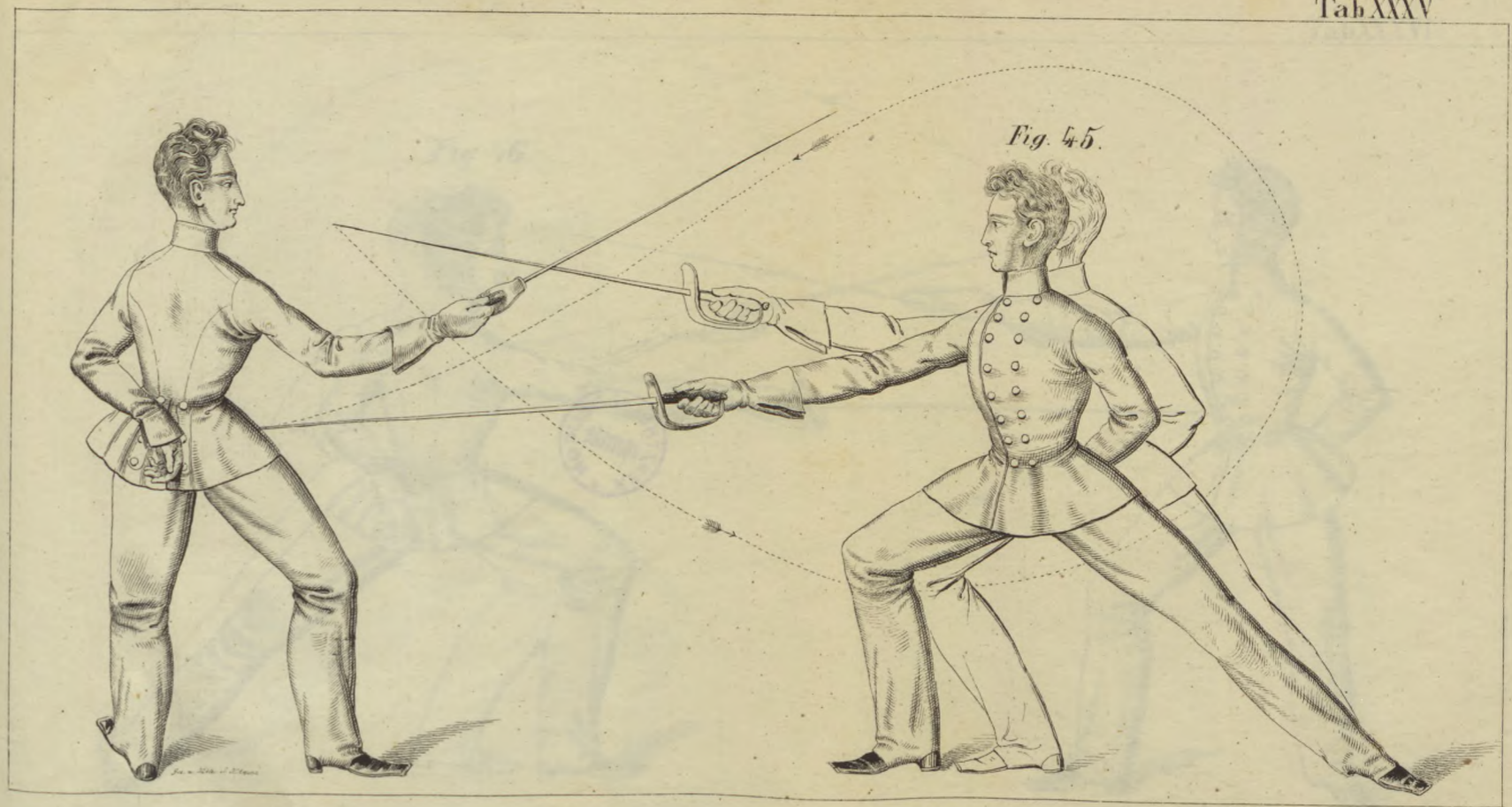


KEZT HELYI HELIX  
KÖNYVTÁR

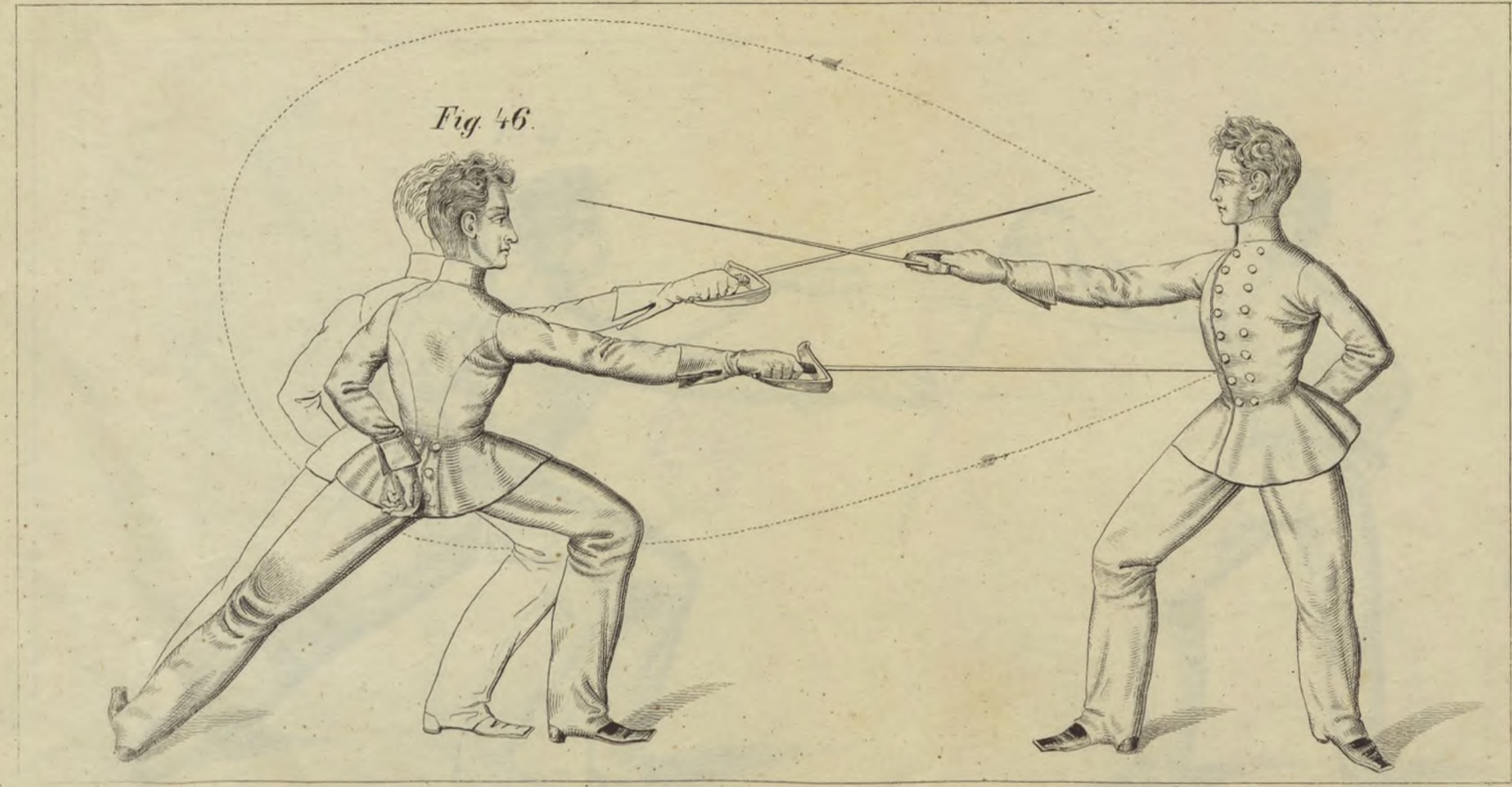












KERTHELYI HELKON  
KÖNYVTÁR







Fig. 48.

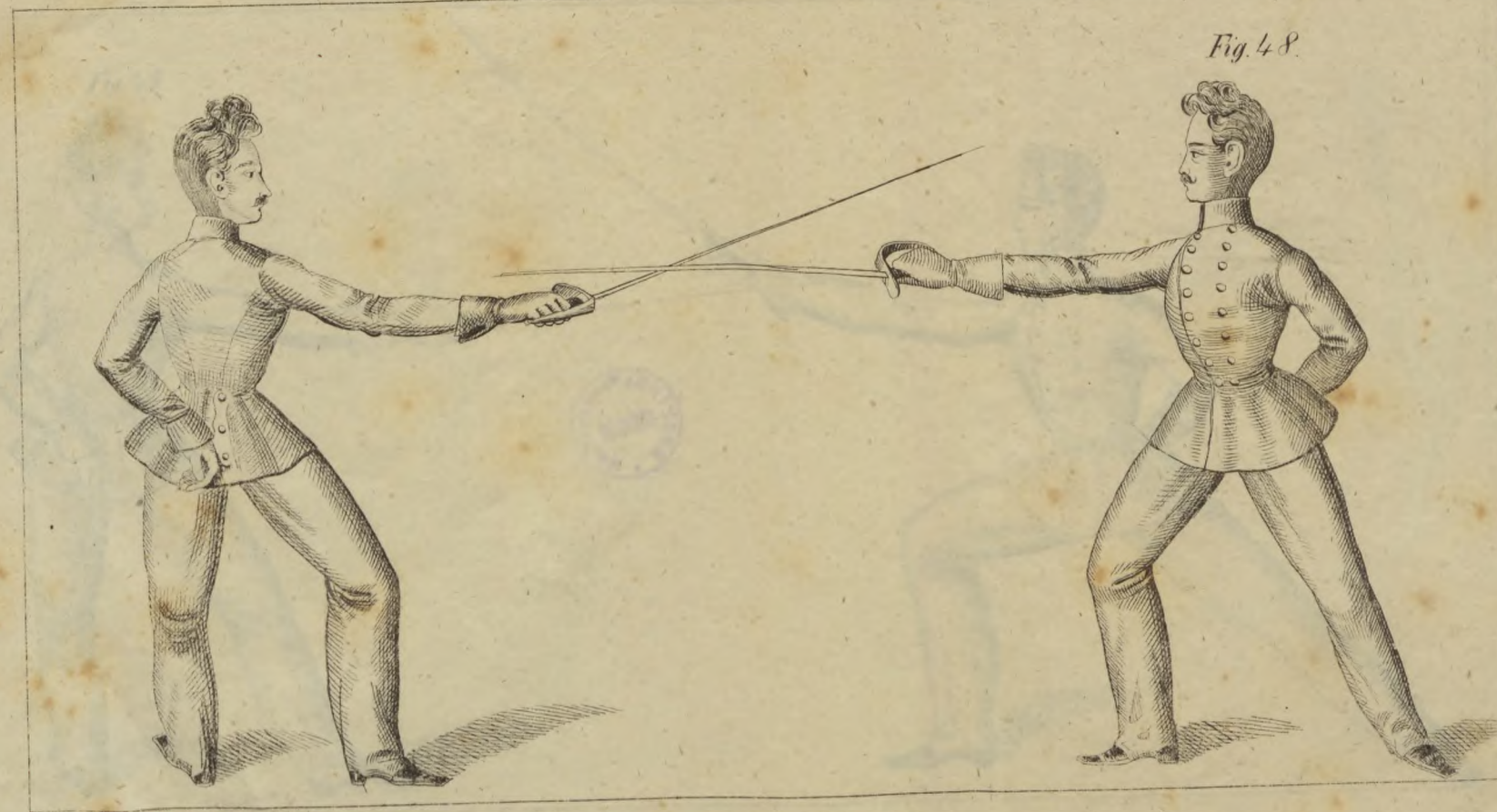




Fig 48



LIBRARY OF THE  
CONGRESS  
SERIALS ACQUISITION  
NO. 100-100

Fig 49

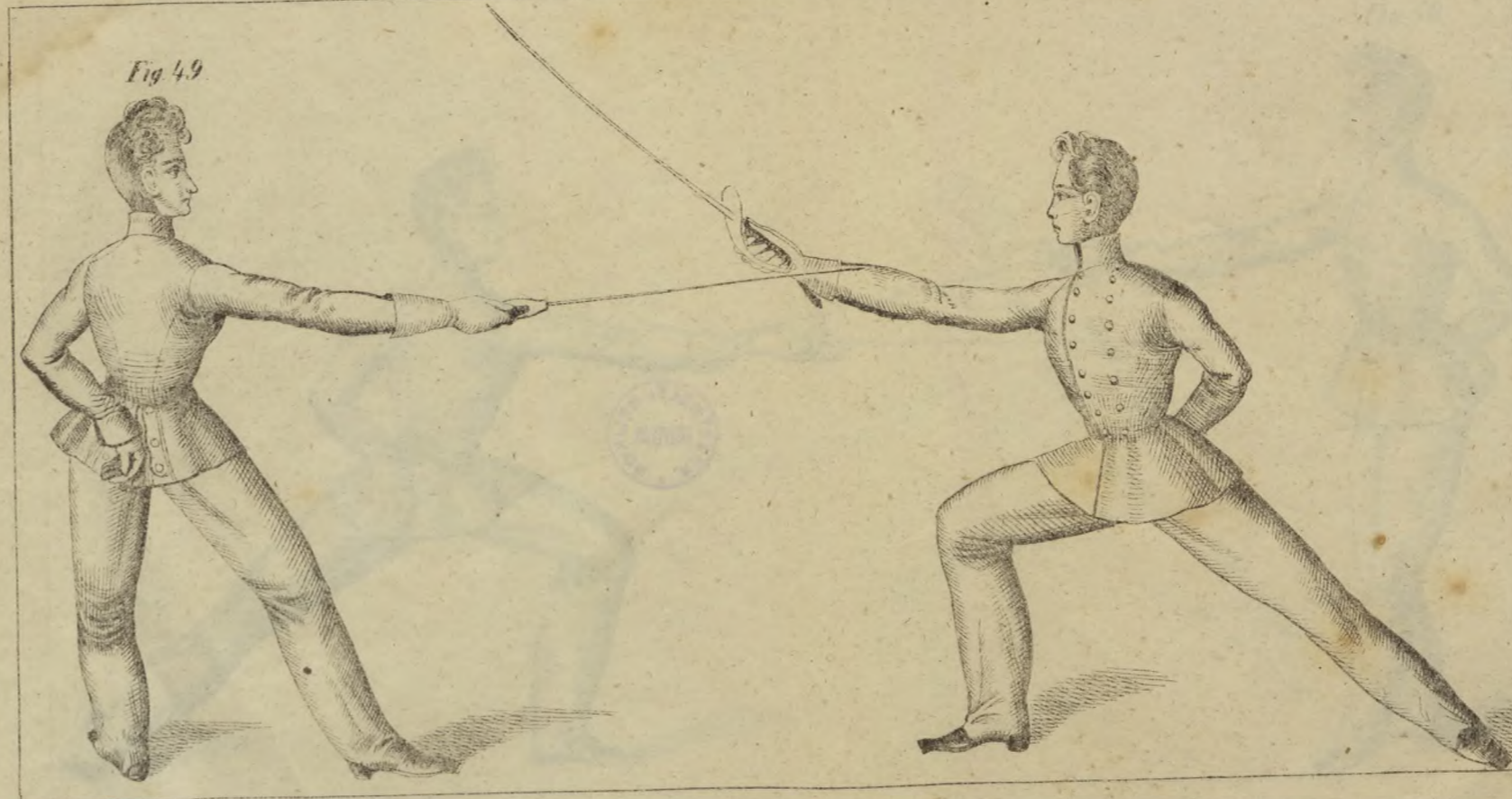
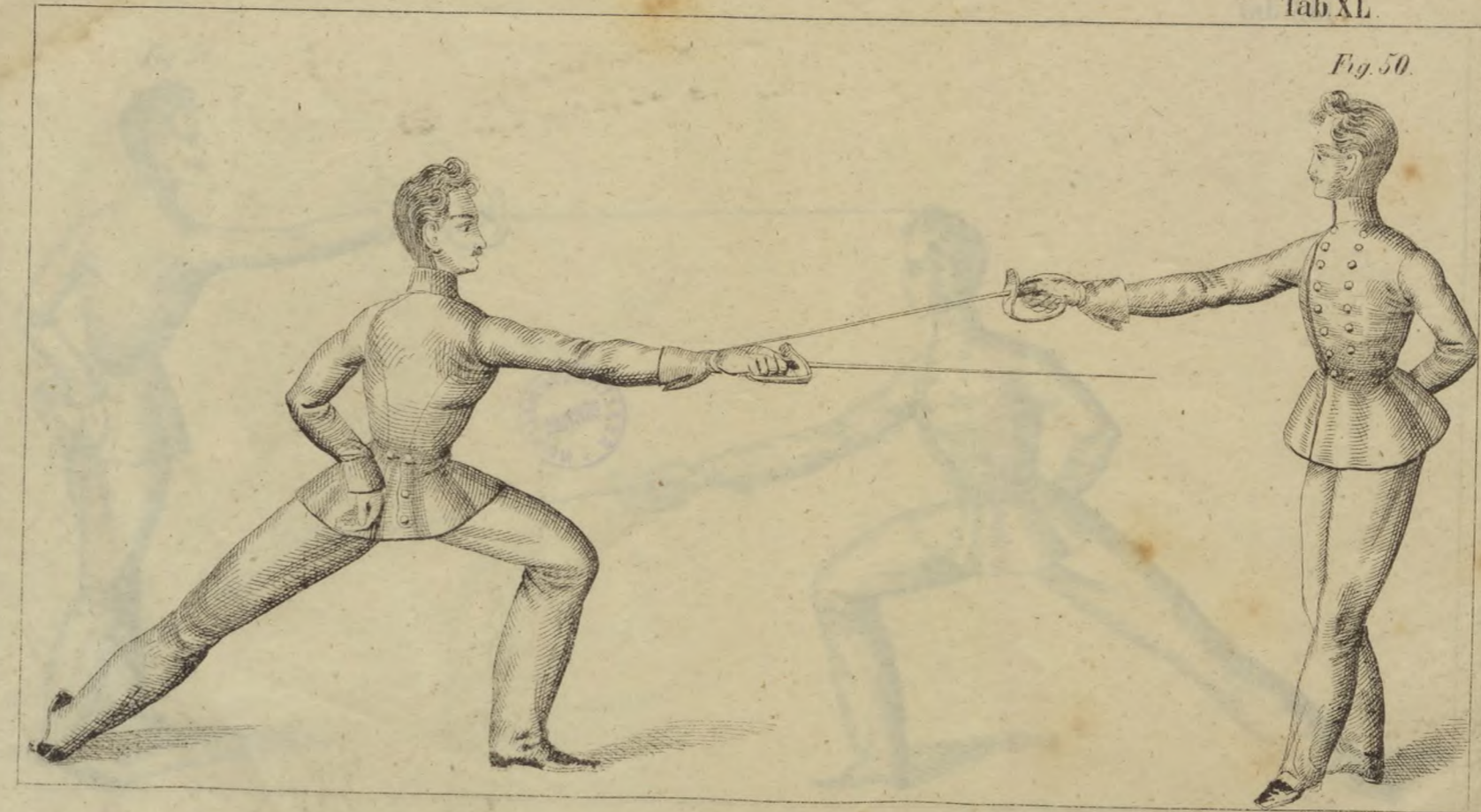




Fig. 50.



KEZTVELYI HELYEN  
KÖNYVTÁR







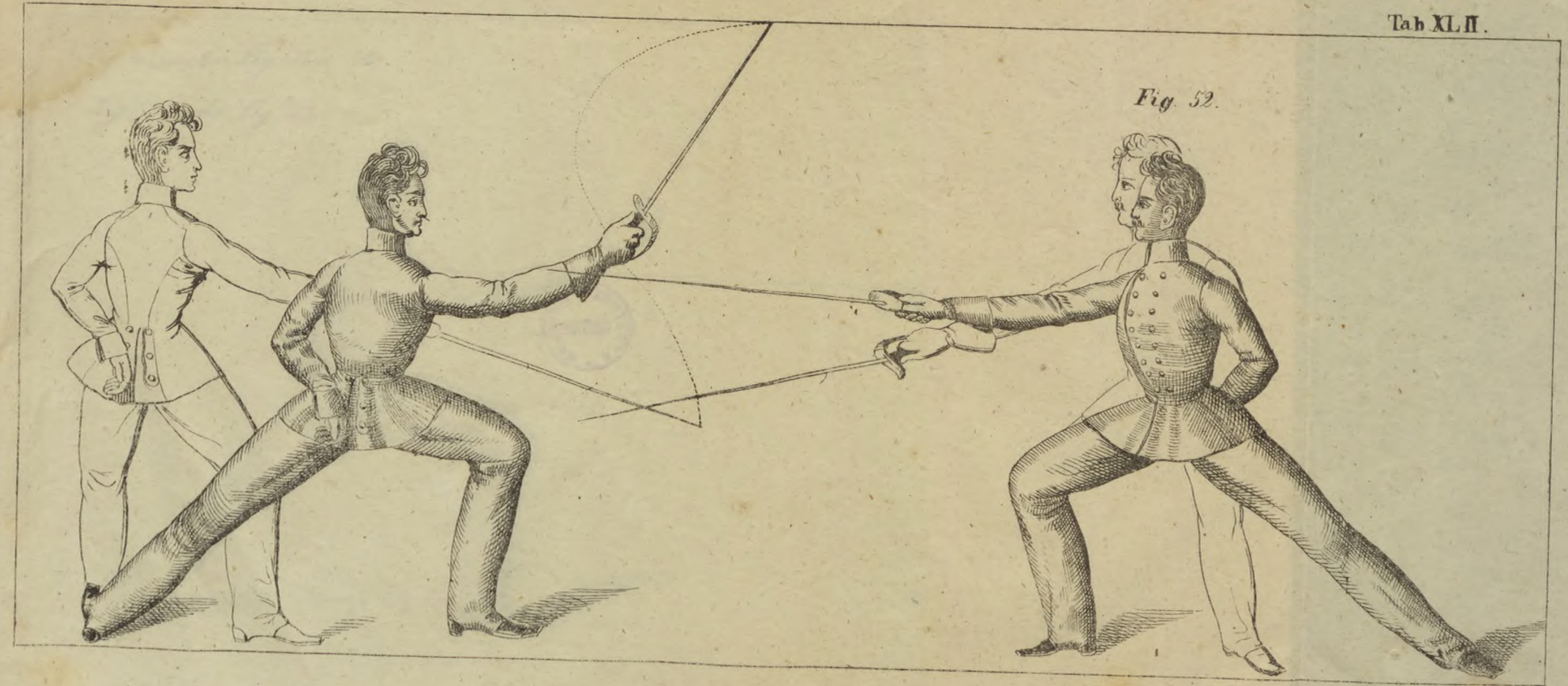
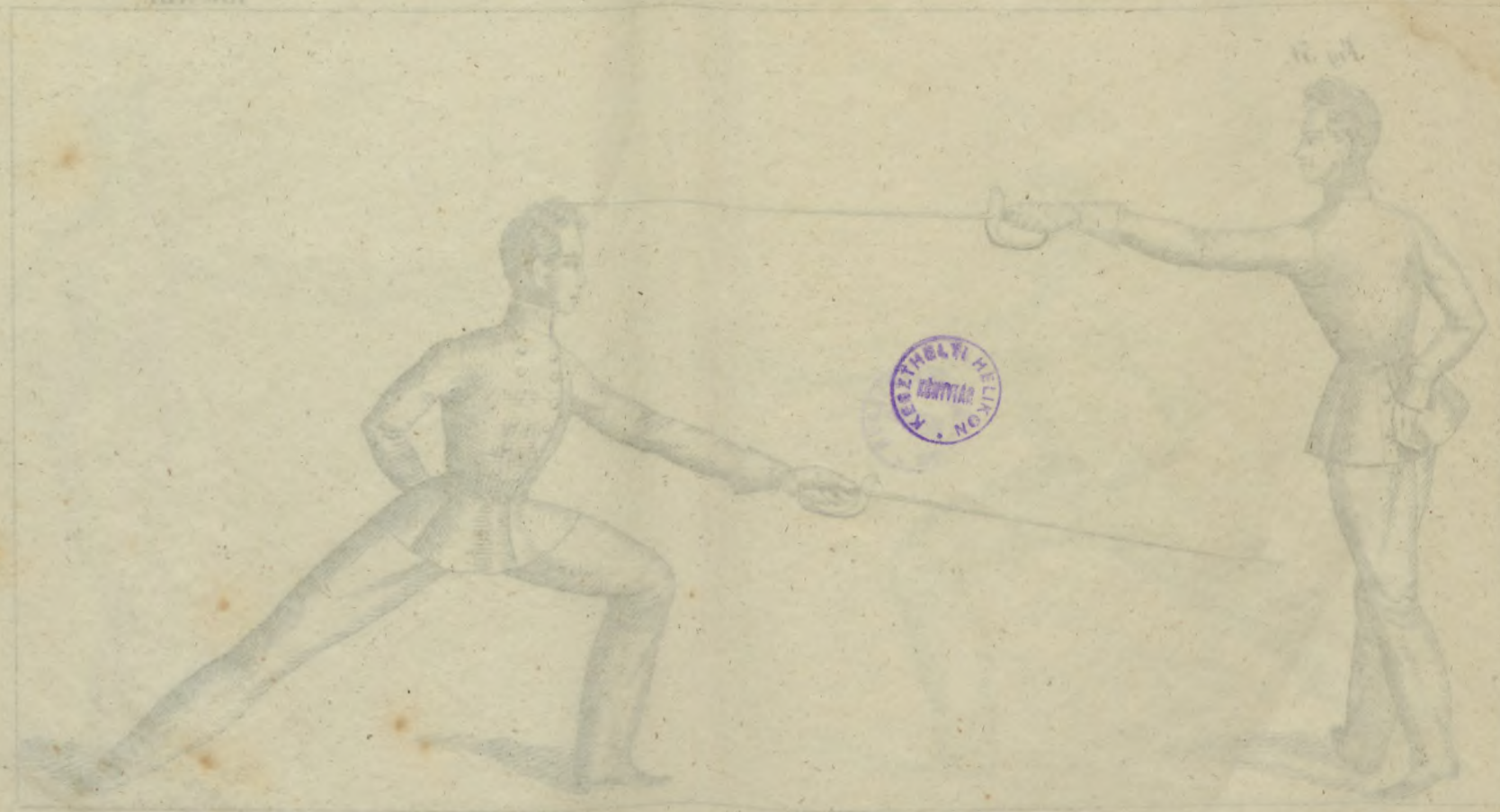
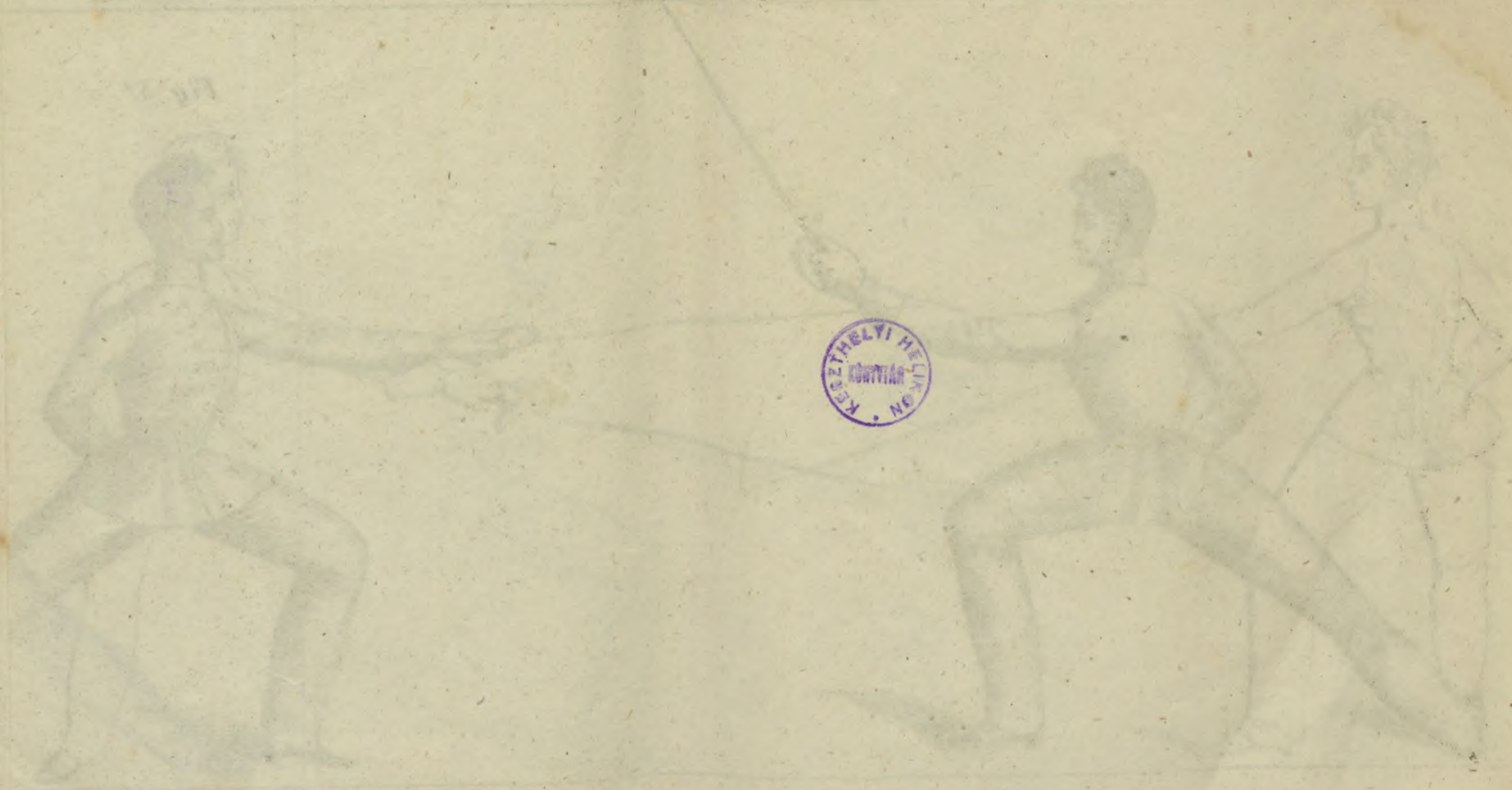
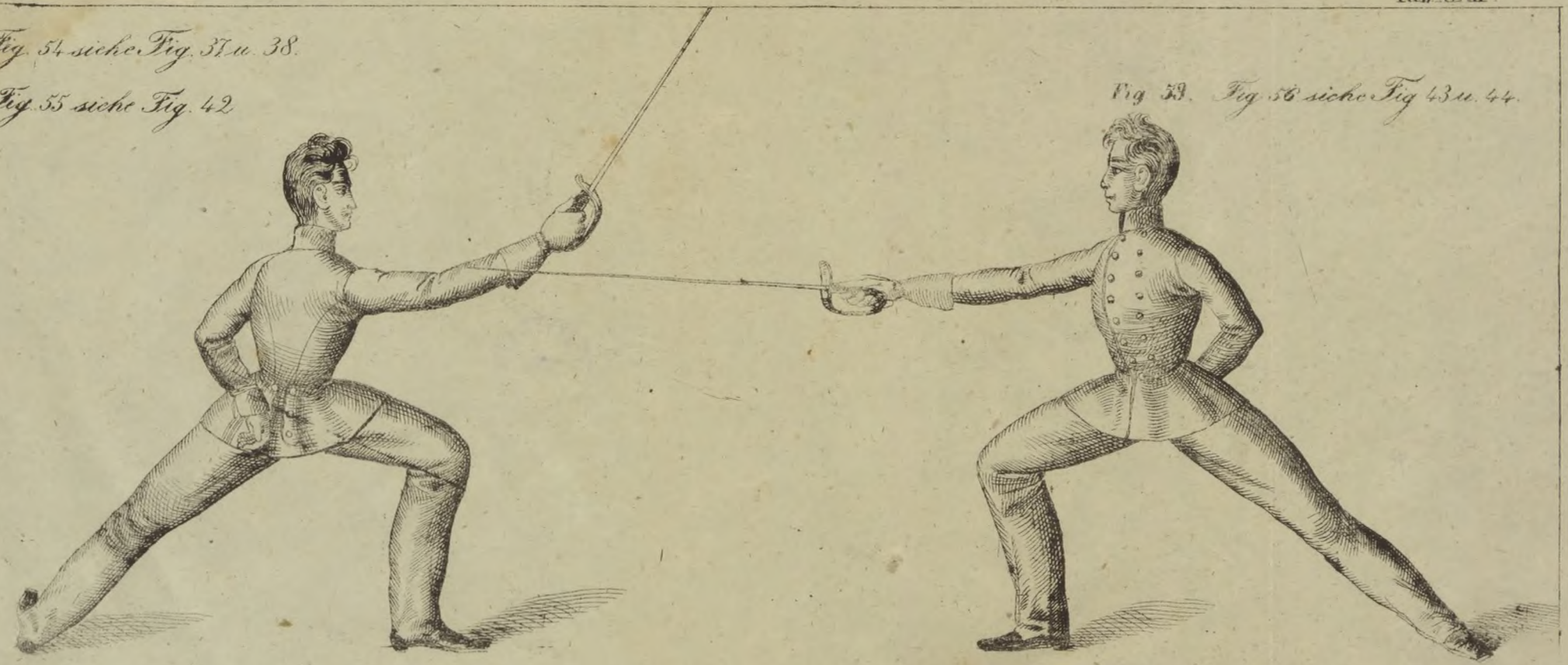




Fig. 54 siehe Fig. 37 u. 38.

Fig. 55 siehe Fig. 42

Fig. 53. Fig. 56 siehe Fig. 43 u. 44.



KEZT HELYI HELYEN  
KÖNYVTÁR



X1-2276.

## Berichtigung

*der eingeschlichenen Fehler bei den Tafeln und lithografierten Abbildungen.*

Tafel 52, in der Reihenfolge übersprungen.

Fig. 19, im Texte übergangen.

Fig. 21, auf der Tafel Nr. 12, gehört zur Verzeichnung des, auf der Seite Nr. 45 beschriebenen Gesichtshiebes einwärts mit verkehrter Richtung der Schneide.

Fig. 21, auf der Tafel 14, gehört zur Verzeichnung des, auf der Seitenzahl Nr. 46 erklärten Gesichtshiebes auswärts mit horizontaler Schneide.

*Der Verfasser.*





A decorative flourish consisting of symmetrical, swirling lines that frame the central text.

**OLMÜTZ.**  
Buchdruckerei von Franz Slawik.  
1853.